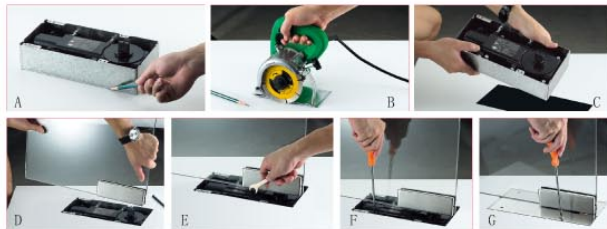
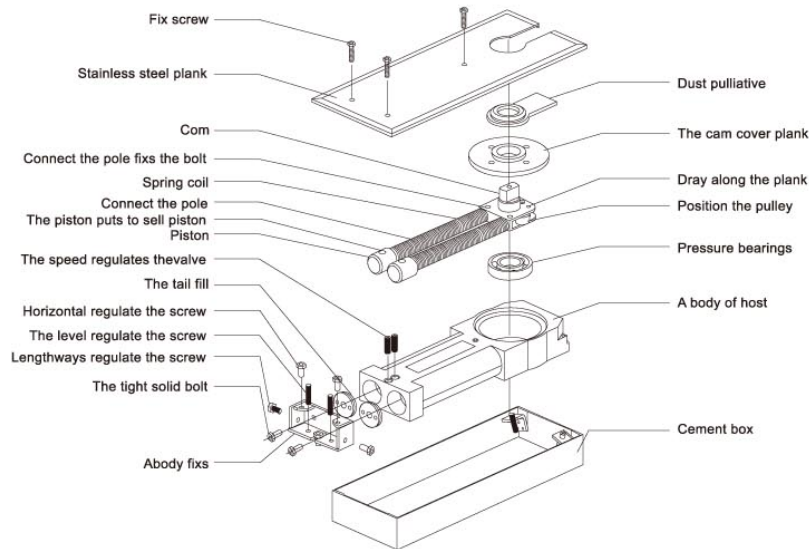




**FLOOR SPRING  
SERIES**

Information on analytical drawing



Floor Spring installation steps:

- A Draw lines and make floor spring pivot center and door-nip pivot coincide with each other.
- B Drill holes on the floor according to the instructions. The sizes of the holes must tightly match the floor spring.
- C Place the floor spring into the holes and position it.
- D Raise the door leaf installed with door-nip, and insert the floor spring pivot into the hple of the door leaf.
- E Adjust the screws at three directions. Make them vertical and the upper and lower pivot center coincide with each other.
- F Adjust the speed of door closing.
- G Put the decoration cover on the floor spring.

**GLX-1001**

Floor springs



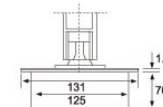
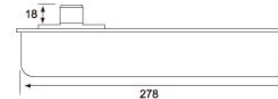
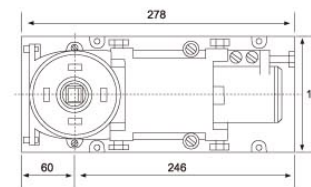
Remarkable Character

- Used low temperature&resist freeze hydraulic pressure oil, keep the door smooth when it is -40° cold.
- After special design, control the bearing of the spring hinge, lighten the strength when open and close the door.
- High strength and leak prevent configuration where use for extend the life of it. As it can avoid mangle. and oil leak by strength or strong wind from outside.
- And it can be adjust 15mm length and 15mm width. Portrait adjust  $\pm 5^\circ$  when calibrate zero site. It makes products more easy.

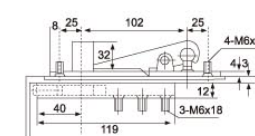
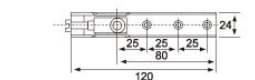
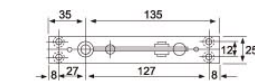
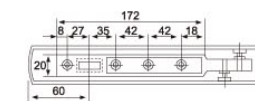
Standard Function

- Suitable for door size 1200x2400mm
- Door weight 120kg
- Angle of turn on the door  $\leq 90^\circ + 125^\circ$
- Suitable for the left, right door open and single, double action

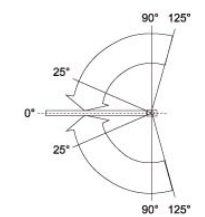
Dimension of appearance



Accessories for glass door



Door adjustment



**GLX-1002**

Floor springs

**Remarkable Character**

- Used low temperature&resist freeze hydraulicpressure oil, keep the door smooth when it is -40° cold.
- After special design, control the bearing of the spring hinge, lighten the strength when open and close the door.
- High strength and leak prevent configuration where use for extend the life of it, As it can avoid mangle, and oil leak by strength or strong wind from outside.
- And it can be adjust 15mm length and 15mm width. Portrait adjust  $\pm 5^\circ$  when calibrate zero site. It makes products more easy.

**Standard Function**

- Suitable for door size 1100x2200mm
- Door weight 120kg
- Angle of turn on the door 90° +125°
- Suitable for the left, right door open and single, double action



DORMA & MAB

**GLX-1003**

Floor springs

**Remarkable Character**

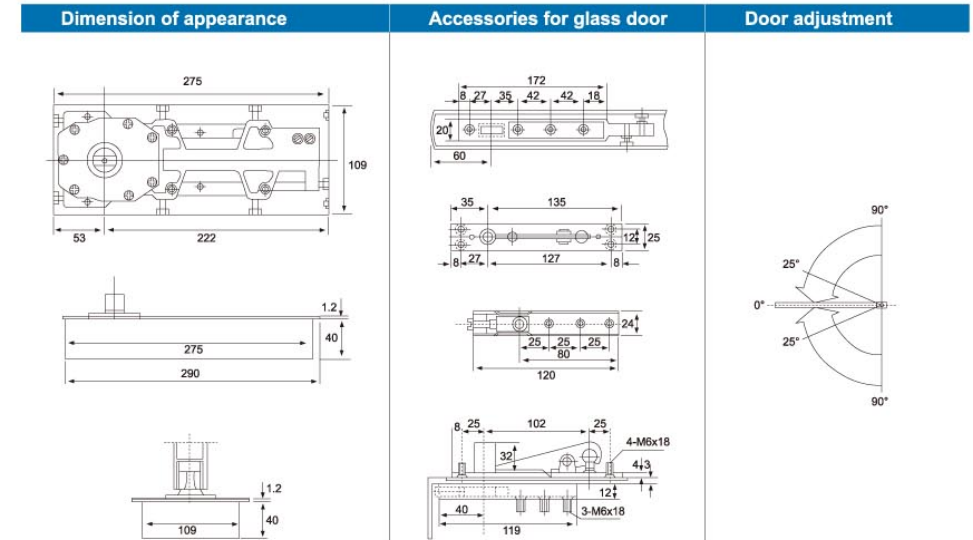
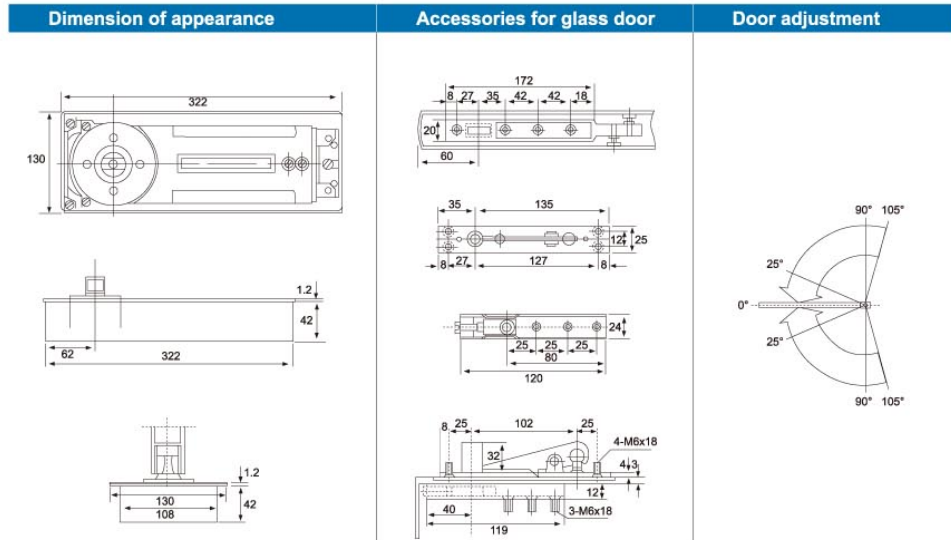
- Used low temperature&resist freeze hydraulicpressure oil, keep the door smooth when it is -40° cold.
- After special design, control the bearing of the spring hinge, lighten the strength when open and close the door.
- High strength and leak prevent configuration where use for extend the life of it, As it can avoid mangle, and oil leak by strength or strong wind from outside.
- And it can be adjust 15mm length and 15mm width. Portrait adjust  $\pm 5^\circ$  when calibrate zero site. It makes products more easy.

**Standard Function**

- Suitable for door size 950x2100mm
- Door weight 90kg
- Angle of turn on the door  $\leq 90^\circ$
- Suitable for the left, right door open and single, double action



DORMA & MAB



## GLX-1004

Floor springs



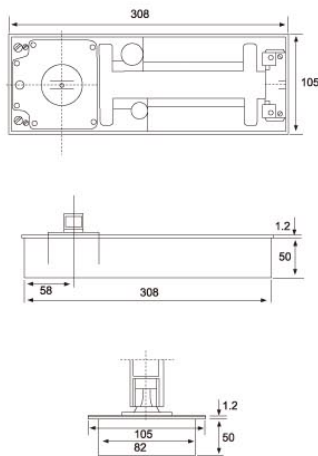
### Remarkable Character

- Used low temperature&resist freeze hydraulicpressure oil, keep the door smooth when it is -40° cold.
- After special design, control the bearing of the spring hinge, lighten the strength when open and close the door.
- High strength and leak prevent configuration where use for extend the life of it, As it can avoid mangle, and oil leak by strength or strong wind from outside.
- And it can be adjust 15mm length and 15mm width. Portrait adjust  $\pm 5^\circ$  when calibrate zero site. It makes products more easy.

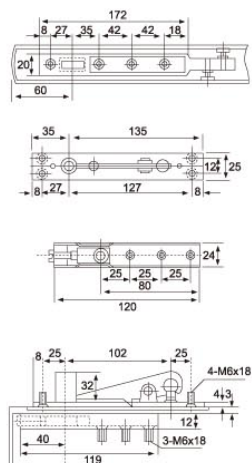
### Standard Function

- Suitable for door size 1300x2400mm
- Door weight 200kg
- Angle of turn on the door  $\leq 105^\circ$
- Suitable for the left, right door open and single, double action

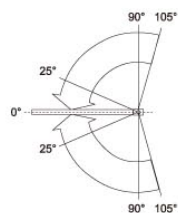
### Dimension of appearance



### Accessories for glass door



### Door adjustment



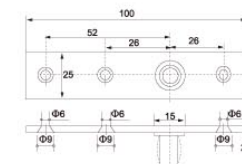
GLX-1005L



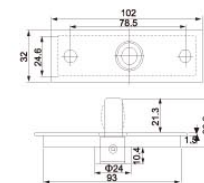
GLX-1005R



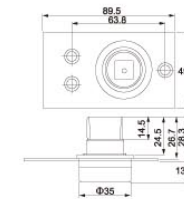
GLX-1006 (COWM)



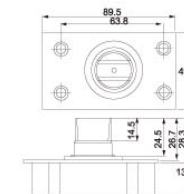
GLX-1007 (DORMA)



GLX-1008 (Floor pivot)

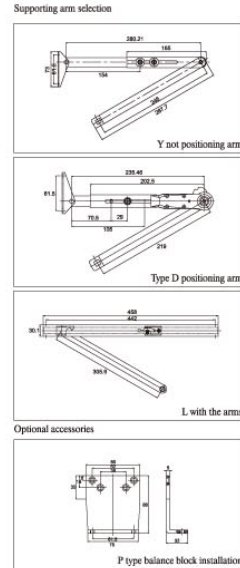


GLX-1009 (Floor pivot)



# GLX-1010

Door closer



## Standard configuration

- Finish: Electrostatic paint
- Materials: Aluminum alloy
- Applied gate width/ gate weight: EN4#
- Max door width: < 1100mm
- Max door weight: < 80kg
- Size: L:205xW50xH40mm
- Application range: Application range, Plastic-steel door, wood door,aluminum door, iron dor
- Max opening angle: Y/D/P:180°-10° L:105°-10°
- Adjustable closing section: A closed-door segment, locked section
- Feature: No damage after opening/ closing of 500,000 times

## Supporting arm selection

### The arm

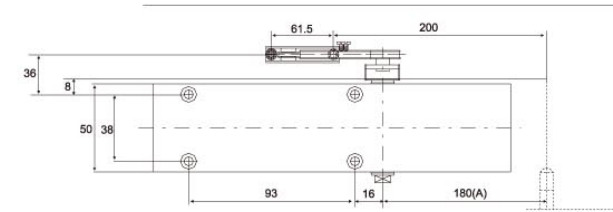
- Y not positioning arm
- Type D positioning arm
- L with the arms

### Accessories

- P type balance block installation

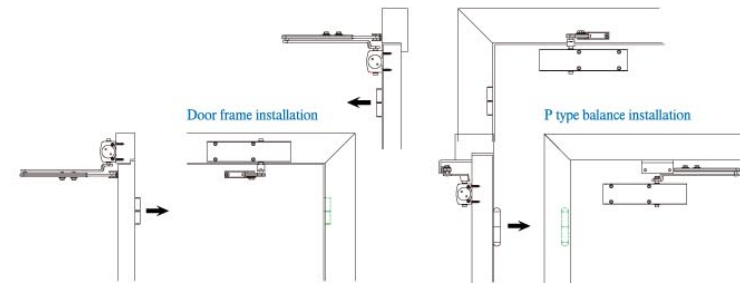
## Feature

- Imported gasket prevents oil leakage.
- Strong spring, high force of door closer.
- Fine quality aluminum alloy, block provided with two bight coatings for protection.
- Fully hydraulic control, two speed control valves for individual control of two stage door closer speed.



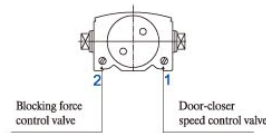
Notice:Distance A is the distance between the hinge and door-top component.The longer distance A the bigger the closing force and vice versa.

A standard installation



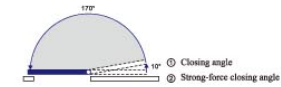
## Illumination of door closer and lock adjustment

Regulating valve clockwise rotation slows down  
Counterclockwise rotation speed change control valve fast



## Blocking force control valve

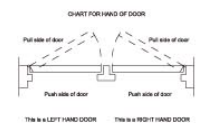
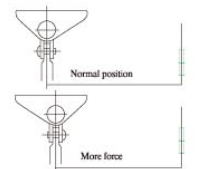
The opening buffer and closing/door closer speed can be adjusted so as to control the full opening and closing area of door leaf.



1. Closing speed adjustment range Y/D/P:180°-10° L:105°-10°
2. Door closer speed adjustment range 10°-0°

## Door-closer force adjustment

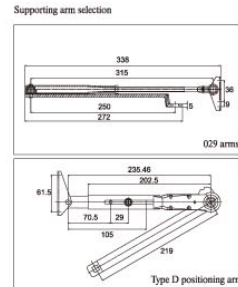
The closing force of door closer can be increased or decreased by adjusting erection position of adjusting supporting arm.



1. Woka reserves the right to change the size without changing the product function. 2. For holding, the latest erection instruction shall prevail. 3. The product photos are only for reference and shall be subject to the physical item.

# GLX-1011

Door closer



### Standard configuration

- Finish: Electrostatic paint
- Materials: Aluminum alloy
- Applied gate width/ gate weight: EN2#/EN3#/EN4#
- Max door width: < 850mm/950/1100mm
- Max door weight: < 40kg/60kg/80kg
- Size: L218xW52xH42.5mm
- Application range: Application range, Plastic-steel door, wood door,aluminum door, iron dor
- Max opening angle: EN2#/EN3#:180° EN4#:130°
- Adjustable closing section: A closed-door segment, locked section
- Feature: No damage after opening/ closing of 500,000 times

CE C E :  $\frac{4}{3}$   $\frac{8}{2}$   $\frac{4}{2}$   $\frac{1}{1}$   $\frac{3}{3}$   
Certificate number: 0359-CPD-0317

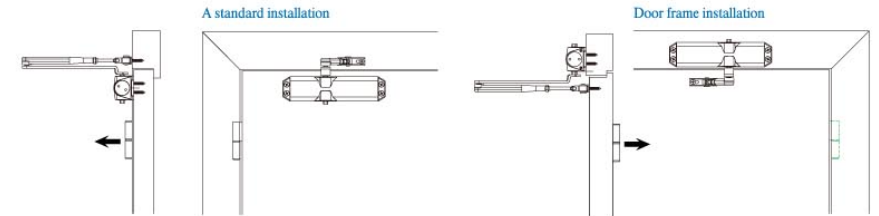
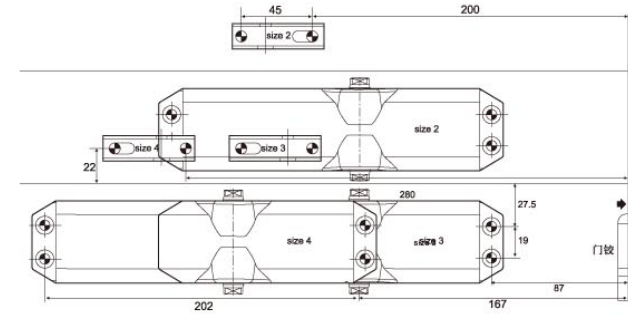
### Supporting arm selection

#### The arm

029 arms  
Type D positioning arm

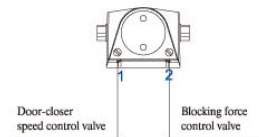
### Feature

- Imported gasket prevents oil leakage.
- Strong spring, high force of door closer.
- Fine quality aluminum alloy, block provided with two tight coatings for protection.
- Fully hydraulic control, two speed control valves for individual control of two stage door closer speed.



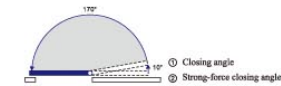
### Illumination of door closer and lock adjustment

Regulating valve clockwise rotation slows down  
Counterclockwise rotation speed change control valve fast



### Blocking force control valve

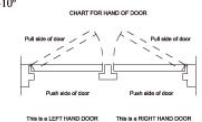
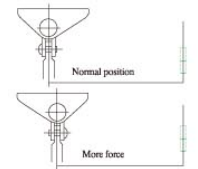
The opening buffer and closing/door closer speed can be adjusted so as to control the full opening and closing area of door leaf.



1. Closing speed adjustment range EN2#/EN3#:180°-10° EN4#:130°-10°
2. Door closer speed adjustment range 10°-0°

### Door-closer force adjustment

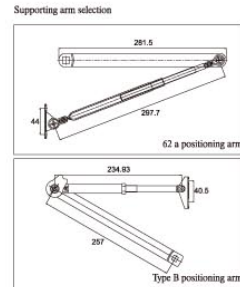
The closing force of door closer can be increased or decreased by adjusting erection position of adjusting supporting arm.



1. Woka reserves the right to change the size without changing the product function.
2. For holding, the latest erection instruction shall prevail.
3. The product photos are only for reference and shall be subject to the physical item.

# GLX-1012

Door closer



### Standard configuration

	Finish: Electrostatic paint
	Materials: Aluminum alloy
	Applied gate width/ gate weight: EN3#/EN4#
	Max door width: < 950mm/1100mm
	Max door weight: < 60kg/80kg
	Size: L206xW57xH70.5mm
	Application range: Application range, Plastic-steel door, wood door,aluminum door, iron dor
	Max opening angle: 180°
	Adjustable closing section: A closed-door segment, locked section
	Feature: No damage after opening/ closing of 500,000 times

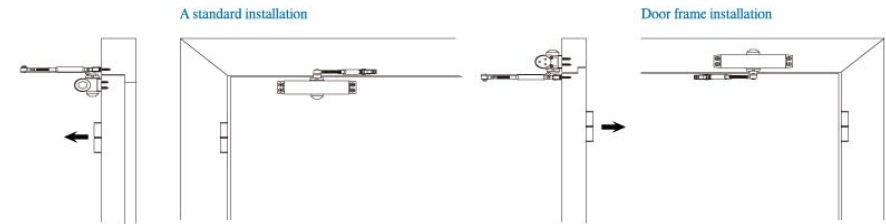
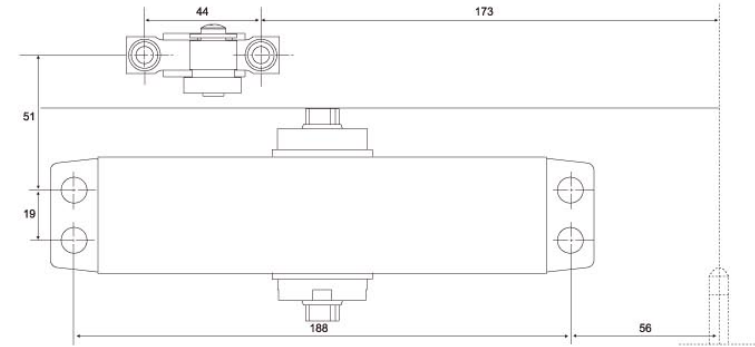
### Supporting arm selection

#### The arm

- 62 a positioning arm
- Type B positioning arm

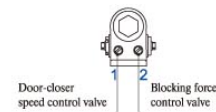
### Feature

- Imported gasket prevents oil leakage.
- Strong spring, high force of door closer.
- Fine quality aluminum alloy, block provided with two bight coatings for protection.
- Fully hydraulic control, two speed control valves for individual control of two stage door closer speed.



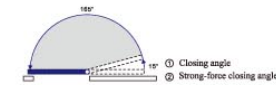
### Illumination of door closer and lock adjustment

- Regulating valve clockwise rotation slows down
- Counterclockwise rotation speed change control valve fast



### Blocking force control valve

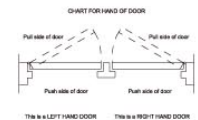
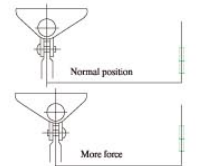
- The opening buffer and closing/door closer speed can be adjusted so as to control the full opening and closing area of door leaf.



- Closing speed adjustment range 180°-15°
- Door closer speed adjustment range 15°-0°

### Door-closer force adjustment

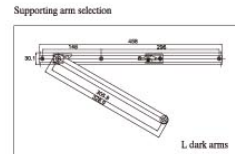
- The closing force of door closer can be increased or decreased by adjusting erection position of adjusting supporting arm.






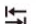




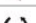

1. Woka reserves the right to change the size without changing the product function. 2. For holling, the latest erection instruction shall prevail. 3. The product photos are only for reference and shall be subject to the physical item.

# GLX-1013

Door closer



### Standard configuration

-  Finish: Electrostatic paint
-  Materials: Aluminum alloy
-  Applied gate width/ gate weight: EN2#
-  Max door width: < 850mm
-  Max door weight: < 60kg
-  Size: L220xW34xH60mm
-  Application range: Application range, Plastic-steel door, wood door,aluminum door, iron dor
-  Max opening angle: 180°
-  Adjustable closing section: A closed-door segment, locked section
-  Feature: No damage after opening/ closing of 500,000 times

### Supporting arm selection

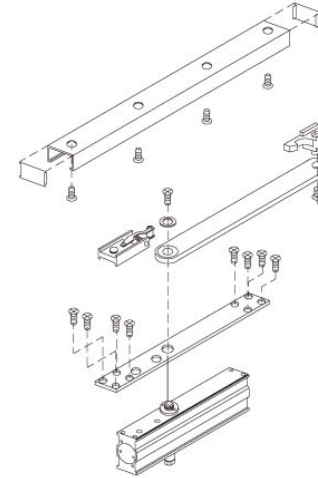
#### The arm

L dark arms

### Feature

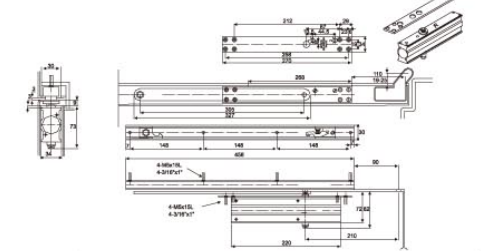
- Imported gasket prevents oil leakage.
- Strong spring, high force of door closer.
- Fine quality aluminum alloy, block provided with two tight coatings for protection.
- Fully hydraulic control, two speed control valves for individual control of two stage door closer speed.

### Figure 82 hidden door closers combination

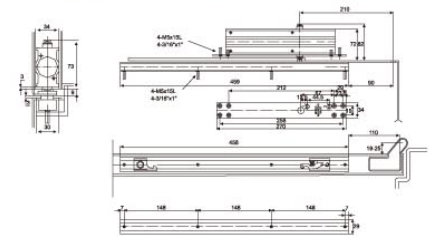


### Right hand opening

The right to open door fixed plate is installed in With the letter R on cylinder body side



### Right hand opening. Top jamb installation

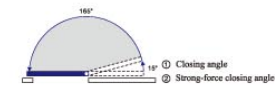
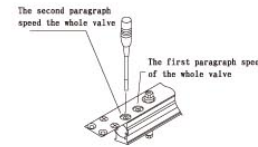
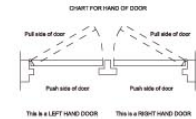


### Illumination of door closer and lock adjustment

- Regulating valve clockwise rotation slows down
- Counterclockwise rotation speed change control valve fast

### Blocking force control valve

The opening buffer and closing/door closer speed can be adjusted so as to control the full opening and closing area of door leaf.



1. Closing speed adjustment range 105°-15°
2. Door closer speed adjustment range 15°-0°

1. Woka reserves the right to change the size without changing the product function. 2. For holding, the latest erection instruction shall prevail.  
3. The product photos are only for reference and shall be subject to the physical item.



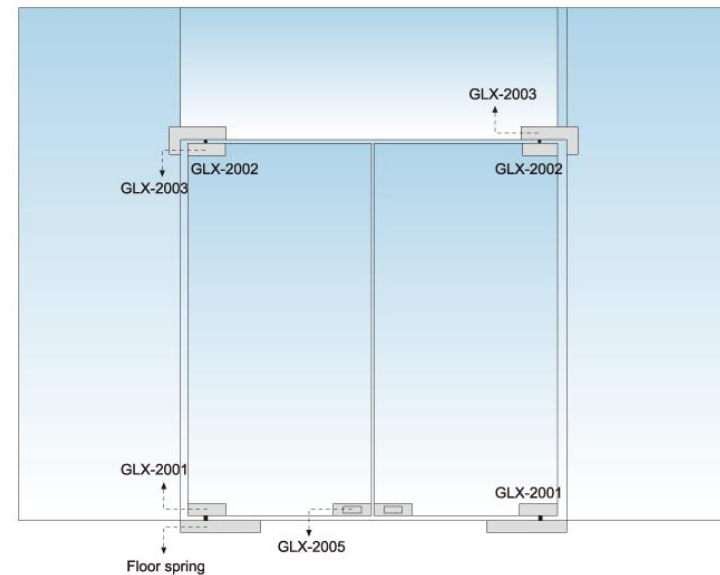


# PATCH FITTING SERIES



## Patch fitting

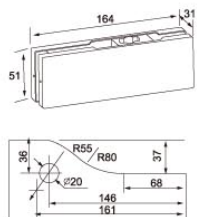
suitable for 10mm-12mm glass  
Cover stainless steel / Aluminium  
Material: Body is Aluminium alloy  
Finish: Polished / Satin / Gold



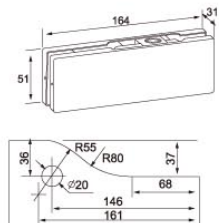
AVAILABLE FINISH



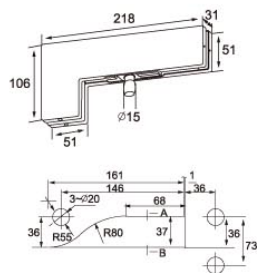
GLX-2001 Lower hinge



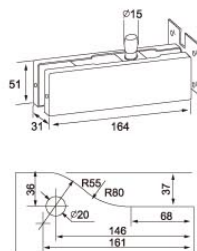
GLX-2002 Upper hinge



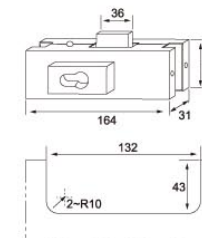
GLX-2003 L-shape clamp



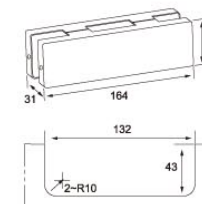
GLX-2004 Over panel



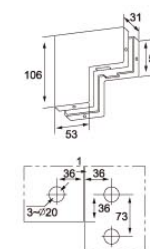
GLX-2005 Patch lock



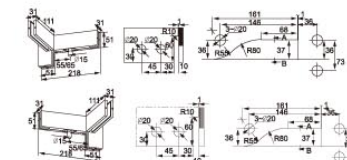
GLX-2006 Strike box



GLX-2007 Corner clamp



GLX-2008L/R

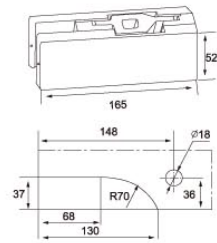


L-SHAPE WITH FIN (L)

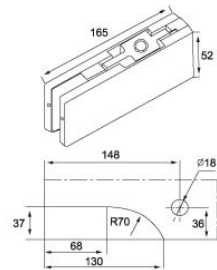
L-SHAPE WITH FIN (R)

**PATCH FITTING SERIES**

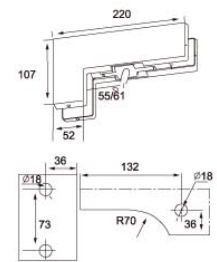
GLX-2009 Lower hinge



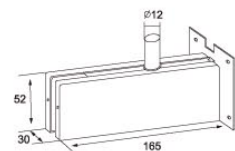
GLX-2010 Upper hinge



GLX-2011 L-shape clamp

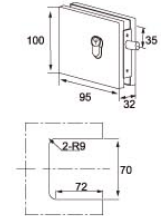


GLX-2012 Over panel

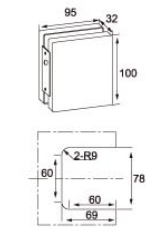


**PATCH FITTING SERIES**

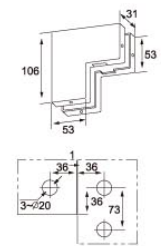
GLX-2013 Center lock



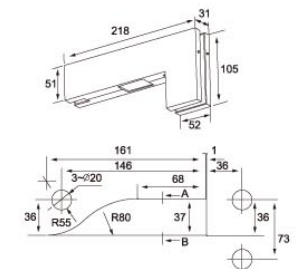
GLX-2014 Strike box



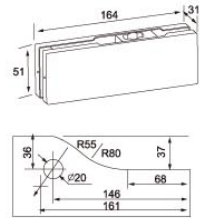
GLX-2015 Corner clamp



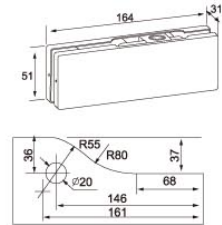
GLX-2016 L-shape clamp



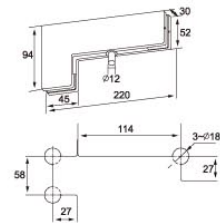
GLX-2017 Lower hinge



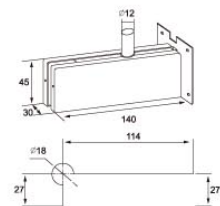
GLX-2018 Upper hinge



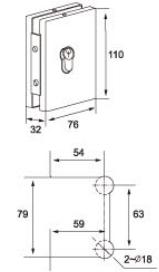
GLX-2019 L-shape clamp



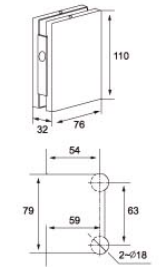
GLX-2020 Over panel



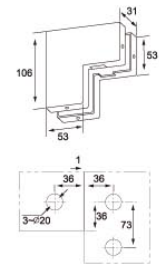
GLX-2021 Center lock



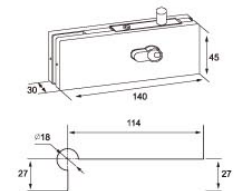
GLX-2022 Strike box



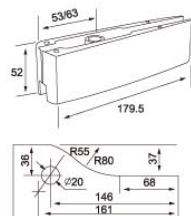
GLX-2023 Corner clamp



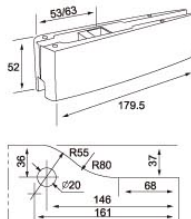
GLX-2024 Patch lock



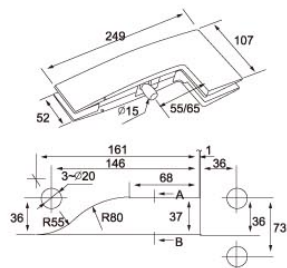
GLX-2025 Lower hinge



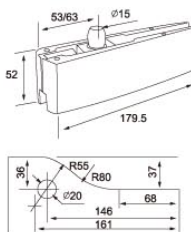
GLX-2026 Upper hinge



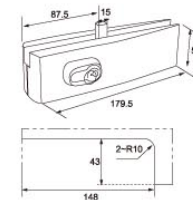
GLX-2027 L-shape clamp



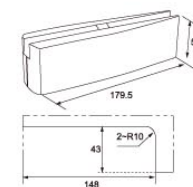
GLX-2028 Over panel



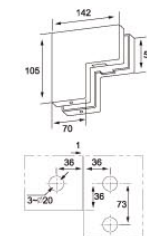
GLX-2029 Patch lock



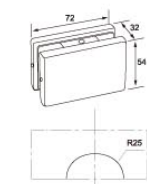
GLX-2030 Strike box



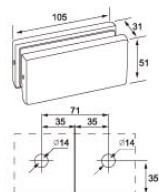
GLX-2031 Corner clamp



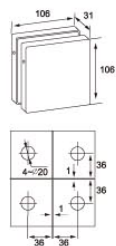
GLX-2032 Clamp



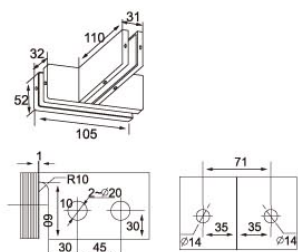
GLX-2033 Clamp



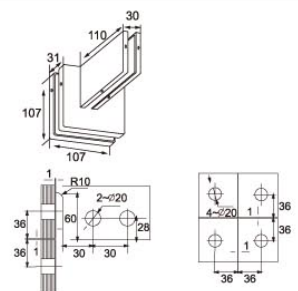
GLX-2034 Clamp



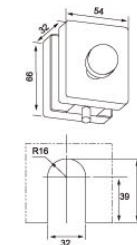
GLX-2035 Clamp with fin



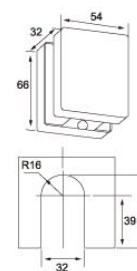
GLX-2036 Clamp with fin



GLX-2037 Knob lock



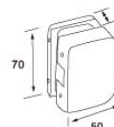
GLX-2038 Strike box



GLX-2039 Patch lock



GLX-2040 Strike box



GLX-2041 Top kick Plate



GLX-2042 Bottom kick plate



**HANDLE SERIES**



**GLX-3001**

Material: Stainless steel  
Finish: PSS+SSS+HOLE  
Size(mm) A1:200 A2:400 B/ D-Φ19  
Size(mm) A1:300 A2:500 B/ D-Φ25  
Size(mm) A1:200 A2:400 B/ D-Φ25



**GLX-3002**

Material: Stainless steel  
Finish: PSS+SSS+HOLE  
Size(mm) A1:200 A2:400 B/ D-Φ19  
Size(mm) A1:300 A2:500 B/ D-Φ25  
Size(mm) A1:200 A2:400 B/ D-Φ25



**GLX-3003**

Material: Stainless steel  
Finish: PSS+SSS+HOLE  
Size(mm) A1:200 A2:400 B/ D-Φ19  
Size(mm) A1:300 A2:500 B/ D-Φ25  
Size(mm) A1:200 A2:400 B/ D-Φ25



**GLX-3004**

Material: Stainless steel  
Finish: PSS+SSS+HOLE  
Size(mm) A1:200 A2:400 B/ D-Φ19  
Size(mm) A1:300 A2:500 B/ D-Φ25  
Size(mm) A1:200 A2:400 B/ D-Φ25



**GLX-3009**

Material: Stainless steel  
Finish: PSS+SSS+HOLE  
Size(mm) A:600 B:300 D-Φ32  
Size(mm) A:800 B:600 D-Φ32  
Size(mm) A:1500 B:1200 D-Φ38



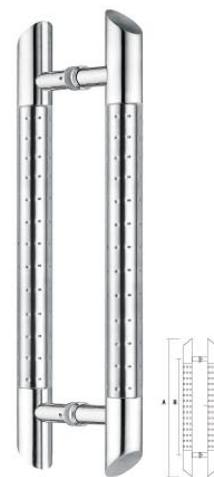
**GLX-3010**

Material: Stainless steel  
Finish: PSS+SSS  
Size(mm) A:600 B:300 D-Φ32  
Size(mm) A:800 B:600 D-Φ32  
Size(mm) A:1500 B:1200 D-Φ38



**GLX-3011**

Material: Stainless steel  
Finish: Chrome+Satın+Hole  
Size(mm) A:600 B:300 D-Φ38  
Size(mm) A:800 B:600 D-Φ38  
Size(mm) A:1200 B:1000 D-Φ38



**GLX-3012**

Material: Stainless steel  
Finish: PSS+SSS+HOLE  
Size(mm) A:350 B:200 D-Φ25  
Size(mm) A:600 B:300 D-Φ32



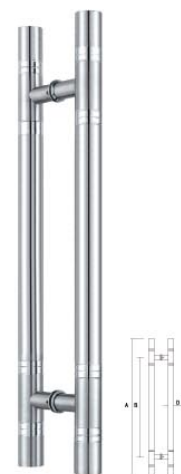
**GLX-3005**

Material: Stainless steel  
Finish: PSS+SSS+HOLE  
Size(mm) A1:200 A2:400 B/ D-Φ19  
Size(mm) A1:300 A2:500 B/ D-Φ25  
Size(mm) A1:200 A2:400 B/ D-Φ25



**GLX-3006**

Material: Stainless steel  
Finish: PSS+SSS  
Size(mm) A:600 B:300 D-Φ32  
Size(mm) A:800 B:600 D-Φ32  
Size(mm) A:1500 B:1200 D-Φ38



**GLX-3007**

Material: Stainless steel  
Finish: PSS+SSS  
Size(mm) A:600 B:300 D-Φ32  
Size(mm) A:800 B:600 D-Φ32  
Size(mm) A:1500 B:1200 D-Φ38



**GLX-3008**

Material: Stainless steel  
Finish: PSS+SSS  
Size(mm) A:600 B:300 D-Φ32  
Size(mm) A:800 B:600 D-Φ32  
Size(mm) A:1500 B:1200 D-Φ38



**GLX-3013**

Material: Stainless steel  
Finish: PSS+SSS+HOLE  
Size(mm) A:600 B:300 D-Φ32  
Size(mm) A:800 B:600 D-Φ32



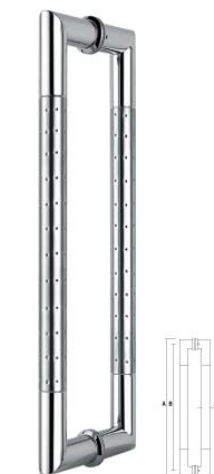
**GLX-3014**

Material: Stainless steel  
Finish: PSS+SSS  
Size(mm) A:600 B:300 D:30x15



**GLX-3015**

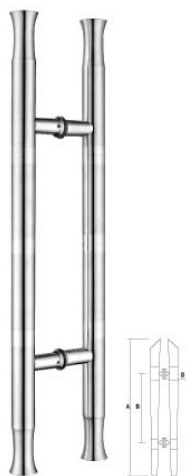
Material: Stainless steel  
Finish: PSS+SSS+HOLE  
Size(mm) A:600 B:300 D:30x15  
Size(mm) A:800 B:600 D:30x20  
Size(mm) A:1200 B:1000 D:30x20



**GLX-3016**

Material: Stainless steel  
Finish: SSS  
Size(mm) A:600 B:300 D:40x30





**GLX-3017**  
Material: Stainless steel  
Finish: PSS+SSS  
Size(mm) A:600 B:300 D:Φ38



**GLX-3018**  
Material: Stainless steel  
Finish: PSS  
Size(mm) A:800 B:570 D:Φ38  
Size(mm) A:800 B:570 D:Φ50



**GLX-3019**  
Material: Stainless steel  
Finish: PSS+SSS  
Size(mm) A:800 B:300 D:Φ38  
Size(mm) A:800 B:450 D:Φ38



**GLX-3020**  
Material: Stainless steel  
Finish: PSS+SSS  
Size(mm) A:600 B:300 D:Φ38



**GLX-3025**  
Material: Stainless steel  
Finish: PSS+SSS  
Size(mm) A:400 B:200 D:Φ32  
Size(mm) A:600 B:300 D:Φ38



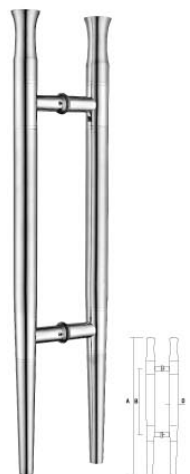
**GLX-3026**  
Material: Stainless steel  
Finish: PSS+SSS  
Size(mm) A:400 B:200 D:Φ32  
Size(mm) A:600 B:300 D:Φ38



**GLX-3027**  
Material: Stainless steel  
Finish: CHROME+SATIN  
Size(mm) A:600 B:300 D:Φ38



**GLX-3028**  
Material: Stainless steel  
Finish: PSS+SSS  
Size(mm) A:600 B:300 D:Φ32



**GLX-3021**  
Material: Stainless steel  
Finish: PSS  
Size(mm) A:800 B:570 D:Φ38  
Size(mm) A:800 B:570 D:Φ50



**GLX-3022**  
Material: Stainless steel  
Finish: PSS+SSS  
Size(mm) A:600 B:300 D:Φ38



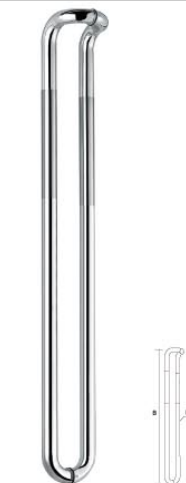
**GLX-3023**  
Material: Stainless steel  
Finish: PSS+SSS  
Size(mm) A:800 B:300 D:Φ38  
Size(mm) A:800 B:450 D:Φ38



**GLX-3024**  
Material: Stainless steel  
Finish: PSS+SSS+HOLE  
Size(mm) A:600 B:400 D:Φ38



**GLX-3029**  
Material: Stainless steel  
Finish: PSS+SSS  
Size(mm) A:600 B:300 D:Φ32



**GLX-3030**  
Material: Stainless steel  
Finish: PSS+SSS  
Size(mm) A:1200 B:1160 D:Φ38



**GLX-3031**  
Material: Stainless steel  
Finish: PSS+SSS  
Size(mm) A:600 B:560 D:Φ38



**GLX-3032**  
Material: Stainless steel  
Finish: PSS+SSS  
Size(mm) A:600 B:300 D:Φ38  
Size(mm) A:600 B:800 D:Φ38



**GLX-3033**  
Material: Stainless steel  
Finish: PSS+SSS  
Size(mm) A:600 B:300 D:Φ38



**GLX-3034**  
Material: Stainless steel  
Finish: PSS+SSS+HOLE  
Size(mm) A:550 B:520 D:Φ38  
Size(mm) A:600 B:562 D:Φ38



**GLX-3035**  
Material: Stainless steel  
Finish: PSS+SSS  
Size(mm) A:600 B:500 D:Φ38  
Size(mm) A:900 B:750 D:Φ50



**GLX-3036**  
Material: Stainless steel  
Finish: PSS+SSS  
Size(mm) A:600 B:300 D:40x20  
Size(mm) A:800 B:600 D:40x20  
Size(mm) A:1000 B:800 D:40x20



**GLX-3037**  
Material: Aluminum  
Size(mm) A:800 B:762 D:Φ38  
Size(mm) A:1200 B:1162 D:Φ38



**GLX-3038**  
Material: Crystal  
Size(mm) A:550 B:285 D:Φ38



**GLX-3039**  
Material: Crystal  
Size(mm) A:550 B:300 D:Φ38



**GLX-3040**  
Material: Crystal  
Size(mm) A:550 B:300 D:Φ38



**GLX-3041**  
Material: Stainless steel  
Finish: PSS/SSS  
Size(mm) A:1500 B:1125 D:Φ35



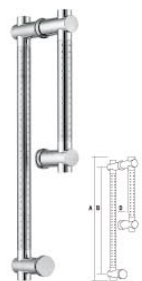
**GLX-3042**  
Material: Stainless steel  
Finish: PSS/SSS  
Size(mm) A:1500 B:1125 D:Φ35



**GLX-3043**  
Material: Stainless steel  
Finish: PSS/SSS  
Size(mm) A:2000 B:725 D:Φ35  
Size(mm) A:2500 B:1225 D:Φ38



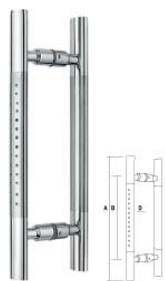
**GLX-3044**  
Material: Stainless steel  
Finish: PSS/SSS  
Size(mm) A:1340 B:950 D:Φ25



**GLX-3045**  
Material: Stainless steel  
Finish: PSS+SSS+HOLE  
Size(mm) A1:200 A2:400 B/ D:Φ19  
Size(mm) A1:300 A2:500 B/ D:Φ25  
Size(mm) A1:200 A2:400 B/ D:Φ25



**GLX-3046**  
Material: Stainless steel  
Finish: PSS+SSS  
Size(mm) A:600 B:600 D:Φ38



**GLX-3047**  
Material: Stainless steel  
Finish: PSS+SSS+HOLE  
Size(mm) A:300 B:200 D:15x30



**GLX-3048**  
Material: Stainless steel  
Finish: PSS+SSS+HOLE  
Size(mm) A:300 B:200 D:15x30



**GLX-3049**  
Material: Stainless steel  
Finish: PSS+SSS+HOLE  
Size(mm) A:360 B:320 D:Φ32



**GLX-3050**  
Material: Stainless steel  
Finish: PSS/SSS  
Size(mm) A:200 B:180 D:Φ19  
Size(mm) A:300 B:275 D:Φ25  
Size(mm) A:400 B:375 D:Φ25



**GLX-3051**  
Material: Stainless steel  
Finish: PSS+SSS  
Size(mm) A:325 B:300 D:Φ32



**GLX-3052**  
Material: Stainless steel  
Finish: PSS+SSS  
Size(mm) A:625 B:600 D:Φ32



**GLX-3053**  
Material: Stainless steel  
Finish: PSS+SSS  
Size(mm) A:325 B:300 D:Φ32



**GLX-3054**  
Material: Stainless steel  
Finish: PSS/SSS  
Size(mm) A:330 B:305 D:Φ25  
Size(mm) A:475 B:450 D:Φ25  
Size(mm) A:625 B:600 D:Φ25



**GLX-3055**  
Material: Stainless steel  
Finish: PSS/SSS  
Size(mm) A:475 B:450 D:Φ25



**GLX-3056**  
Material: Stainless steel  
Finish: PSS/SSS  
Size(mm) A:300 B:200 D:Φ25



**GLX-3057**  
Material: Crystal  
Size(mm) A:60 / B:100mm



**GLX-3058**  
Material: Crystal  
Size(mm) A/ B/ D:180x180



# SHOWER DOOR HINGE SERIES

Material: Stainless steel

Glass thick: 8-12mm  
Door width: 600-800mm  
Weight: 50kgs

Note: bathroom glass clamp, the door closes to about 35°, the door will automatically shut down.

■ AVAILABLE FINISH



■ Hydraulic series  
G: Glass W: Wall P: Pipe

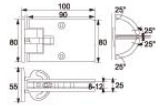
Material: Stainless steel / Zinc / Brass

Glass thick: 8-12mm  
Door width: 600-800mm  
Weight: 50kgs

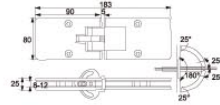
■ AVAILABLE FINISH



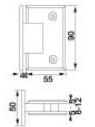
■ Bevel edge series  
G: Glass W: Wall P: Pipe



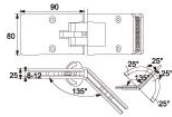
**GLX-4001**  
90° G/W Hydraulic hinges



**GLX-4002**  
180° G/G Hydraulic hinges



**GLX-4009**  
90° G/W Hinge



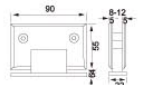
**GLX-4003**  
135° G/G Hydraulic hinges



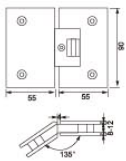
**GLX-4004**  
180° G/G Adjustable hinges



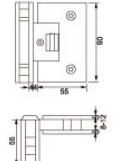
**GLX-4010**  
90° G/W Hinge



**GLX-4011**  
90° G/W Pivot hinge



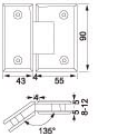
**GLX-4005**  
135° G/G Adjustable hinges



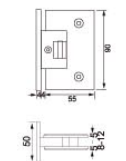
**GLX-4006**  
90° G/G Adjustable hinges



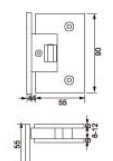
**GLX-4012**  
90° G/G Hinge



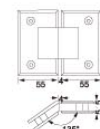
**GLX-4013**  
135° G/G Hinge



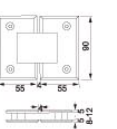
**GLX-4007**  
90° G/W Adjustable hinges



**GLX-4008**  
90° G/W Adjustable hinges



**GLX-4014**  
135° G/G Hinge



**GLX-4015**  
180° G/G Hinge

Material: Zinc / Brass  
Glass thick: 8-12mm  
Door width: 600-800mm  
Weight: 50kgs

■ AVAILABLE FINISH



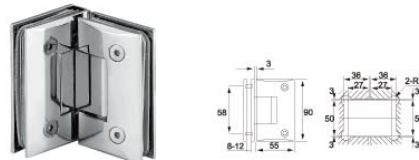
■ Arc surface series  
G: Glass W: Wall P: Pipe



**GLX-4016**  
90° G/W Hinge



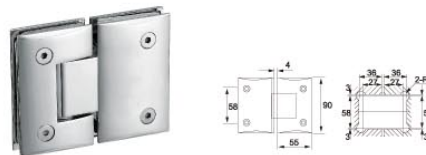
**GLX-4017**  
90° G/W Fixed hinge



**GLX-4018**  
90° G/G Hinge



**GLX-4019**  
135° G/G Hinge



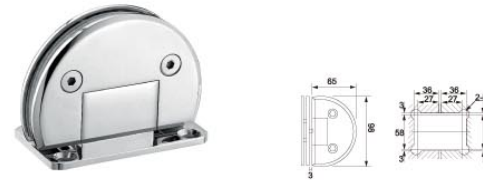
**GLX-4020**  
180° G/G Hinge

Material: Zinc / Brass  
Glass thick: 8-12mm  
Door width: 600-800mm  
Weight: 50kgs

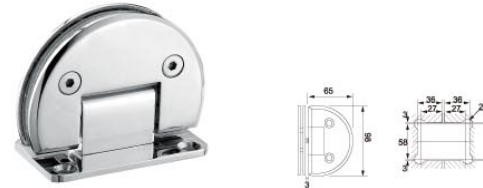
■ AVAILABLE FINISH



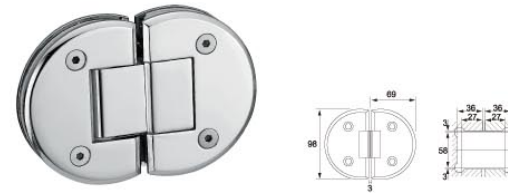
■ Round series  
G: Glass W: Wall P: Pipe



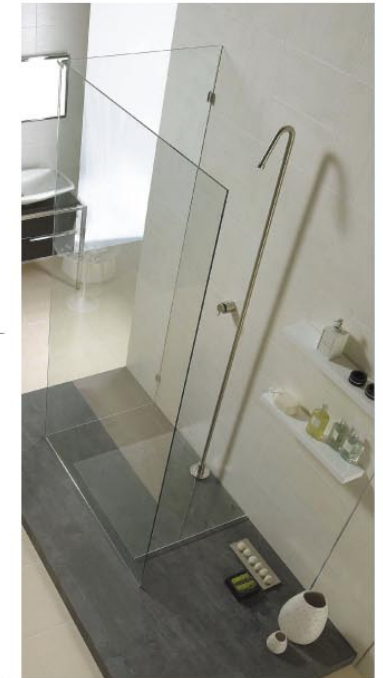
**GLX-4021**  
90° G/W Round hinge



**GLX-4022**  
90° G/W Round hinge



**GLX-4023**  
180° G/W Round hinge



**SHOWER HINGE SERIES**

Material: Stainless steel

Glass thick: 8-12mm  
Door width: 600-800mm  
Weight: 50kgs

■ AVAILABLE FINISH



G: Glass W: Wall P: Pipe



**GLX-4024**  
90° G/W Cambered hinge



**GLX-4025**  
90° G/W Cambered hinge



**GLX-4026**  
135° G/G Cambered hinge



**GLX-4027**  
180° G/G Cambered hinge



**GLX-4028**  
90° G/W Senmi-circular hinge



**GLX-4029**  
180° G/G Senmi-circular hinge

**SHOWER HINGE SERIES**

Material: Stainless steel / Zinc / Brass

Glass thick: 8-12mm  
Door width: 600-800mm  
Weight: 50kgs

■ AVAILABLE FINISH



■ Rectangle series  
G: Glass W: Wall P: Pipe



**GLX-4030**  
135° G/G Senmi-circular hinge



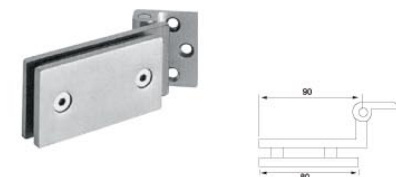
**GLX-4031**  
90° G/G Senmi-circular hinge



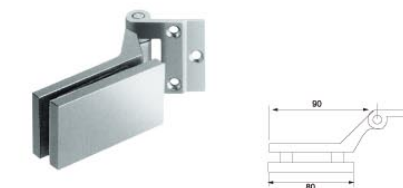
**GLX-4032**  
90° G/W Arc Surface hinge



**GLX-4033**  
135° G/G Arc Surface hinge



**GLX-4034**  
135° G/W Straight edge hinge



**GLX-4035**  
135° G/W Straight edge hinge

**SHOWER HINGE SERIES**

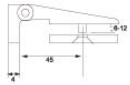
Material: Stainless steel / Zinc / Brass

Glass thick: 8-12mm  
Door width: 600-800mm  
Weight: 50kgs

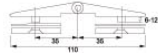
■ AVAILABLE FINISH



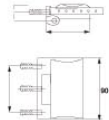
G: Glass W: Wall P: Pipe



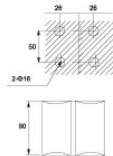
**GLX-4036**  
90° G/W Arc Surface hinge



**GLX-4037**  
180° G/G Arc Surface hinge



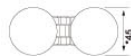
**GLX-4038**  
90° G/W Arc Surface hinge



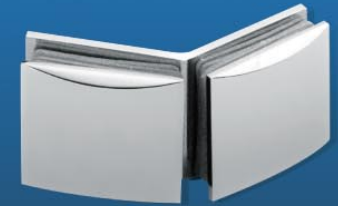
**GLX-4039**  
135° G/G Arc Surface hinge



**GLX-4040**  
90° G/W Circle hinge



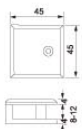
**GLX-4041**  
180° G/W Circle hinge



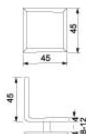
**GLASS CLAMP SERIES**

**STANDARD TECHNICAL INFORMATION**

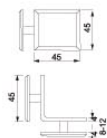
Materials: Stainless steel / Bars, Zinc alloy  
Finish: Chrome, Satin, Gold  
Suitable for 6-12 thickness glass door



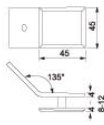
GLX-5001



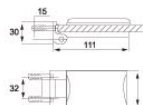
GLX-5002



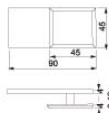
GLX-5003



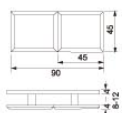
GLX-5004



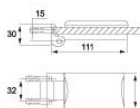
GLX-5005



GLX-5006



GLX-5007



GLX-5008



GLX-5009



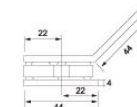
GLX-5009A



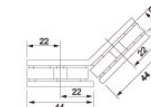
GLX-5010



GLX-5011



GLX-5012



GLX-5013



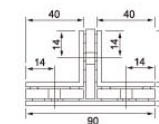
GLX-5014



GLX-5015



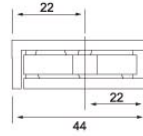
GLX-5016



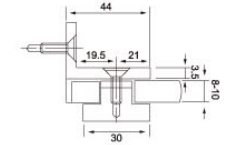




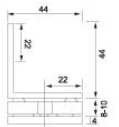
GLX-5017



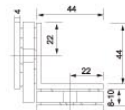
GLX-5024



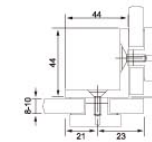
GLX-5018



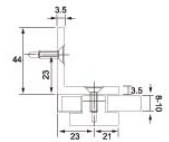
GLX-5019



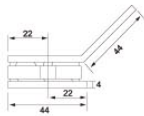
GLX-5025



GLX-5026



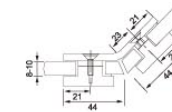
GLX-5020



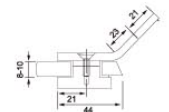
GLX-5021



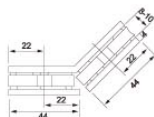
GLX-5027



GLX-5028



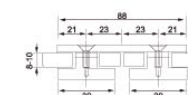
GLX-5022



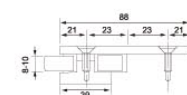
GLX-5023



GLX-5029

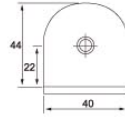


GLX-5030

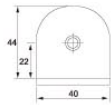




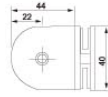
GLX-5031



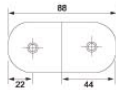
GLX-5032



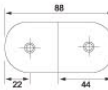
GLX-5033



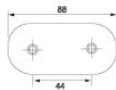
GLX-5034



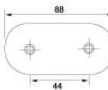
GLX-5035



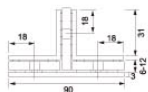
GLX-5036



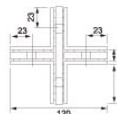
GLX-5037



GLX-5038

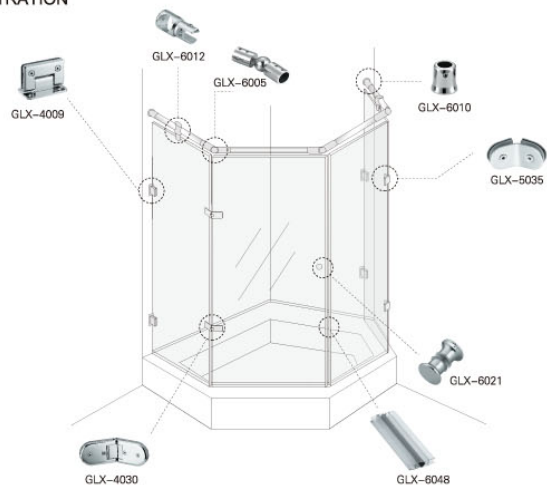


GLX-5039



**SHOWER ACCESSORIES  
SERIES**

INSTALLATION ILLUSTRATION



Material: Stainless steel / Brass/ Zinc  
Suitable for pipe diameter 19&25mm  
G : Glass  
W : Wall  
P : Pipe



GLX-6004 P/P Connector



GLX-6005 Movable P/P



GLX-6006 90° P/P Connector



GLX-6007 P/P Connector



GLX-6008 P/P Connector



GLX-6001 Shower glass suport



GLX-6002 Shower glass suport



GLX-6003 Shower glass suport



GLX-6009 T P/P Connector



GLX-6010 P/W



GLX-6011 Door Stopper



GLX-6012 P/G Holder



GLX-6013 Glass P/G Holder



GLX-6014 P/G Holder



GLX-6015 P/G Connector



GLX-6016 P/G Holder



GLX-6017 P/W Connector



GLX-6018 Zinc / Aluminum / Stainless steel



GLX-6019 Zinc / Aluminum / Stainless steel



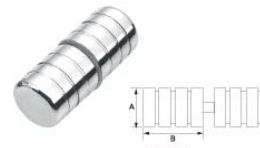
GLX-6020 Zinc / Aluminum / Stainless steel



GLX-6021 Zinc / Aluminum / Stainless steel



GLX-6022 Zinc / Aluminum / Stainless steel



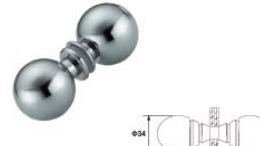
GLX-6023 Zinc / Aluminum / Stainless steel



GLX-6024 Zinc / Aluminum / Stainless steel



GLX-6025 Zinc / Aluminum / Stainless steel



GLX-6026 Zinc / Aluminum / Stainless steel



GLX-6027 Zinc / Aluminum / Stainless steel



GLX-6028 Zinc / Aluminum / Stainless steel



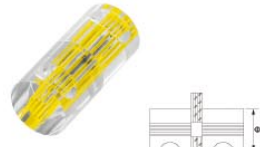
GLX-6029 Zinc / Aluminum / Stainless steel



GLX-6030 Crystal



GLX-6031 Crystal



GLX-6032 Crystal



GLX-6033 Bathroom glass door handle



GLX-6034 Bathroom glass door handle



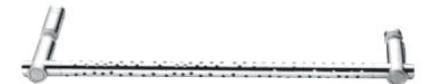
GLX-6036 Bathroom glass door handle



GLX-6038 Bathroom glass door handle



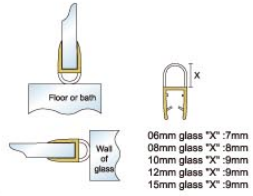
GLX-6035 Bathroom glass door handle



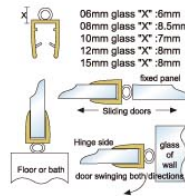
GLX-6037 Bathroom glass door handle



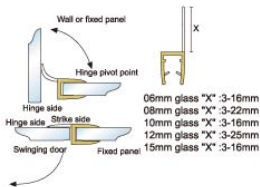
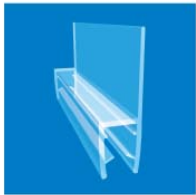
GLX-6039 Bathroom glass door handle



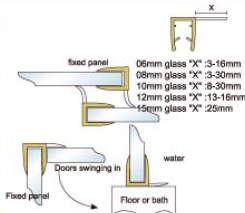
GLX-6040 0° Plastic strip



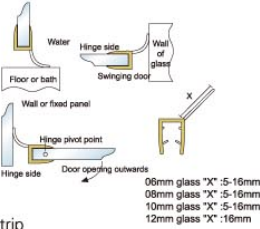
GLX-6041 0° Plastic strip



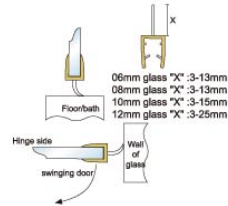
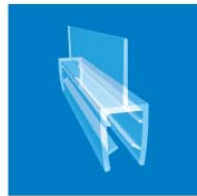
GGLX-6042 180° Plastic strip



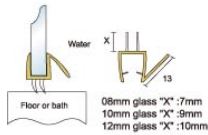
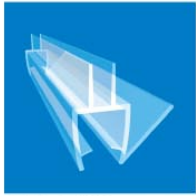
GLX-6043 90° Plastic strip



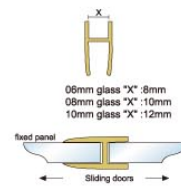
GLX-6044 135° Plastic strip



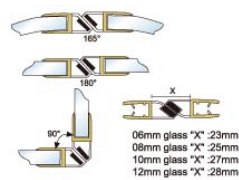
GLX-6045 Plastic strip



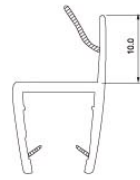
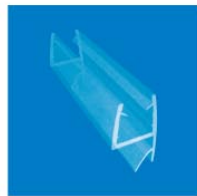
GLX-6046 Plastic strip



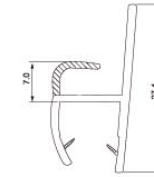
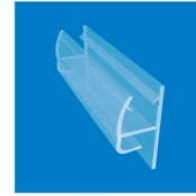
GLX-6047 H-Plastic strip



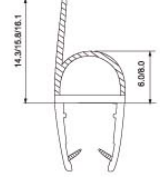
GLX-6048 180°/90° Magnetic Plastic strip



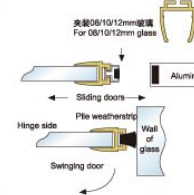
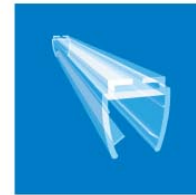
GLX-6049 Plastic strip



GLX-6050 Plastic strip



GLX-6051 Plastic strip



GLX-6052 Plastic strip



GLX-6053 Plastic strip



GLX-6054 Plastic-channel



GLX-6055 Shower sliding wheel



GLX-6056 Shower sliding wheel



GLX-6057 Shower sliding wheel



GLX-6058 Stainless pivot hinge



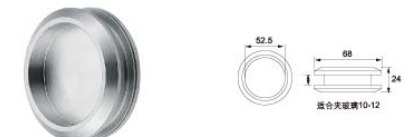
**DOOR SLIDING  
ACCESSORIES SERIES**



GLX-7001 Sliding handle



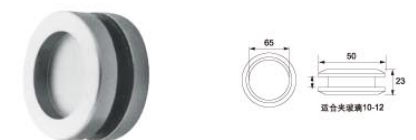
GLX-7002 Sliding handle



GLX-7003 Sliding handle



GLX-7004 lock



GLX-7005 Sliding handle

**GLX-7006**

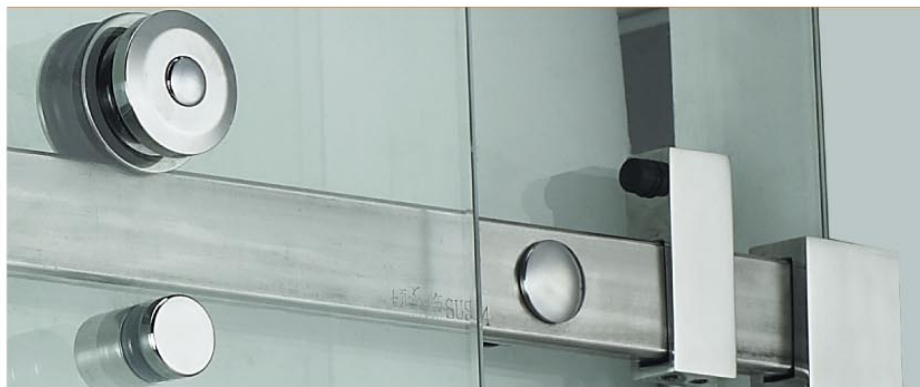
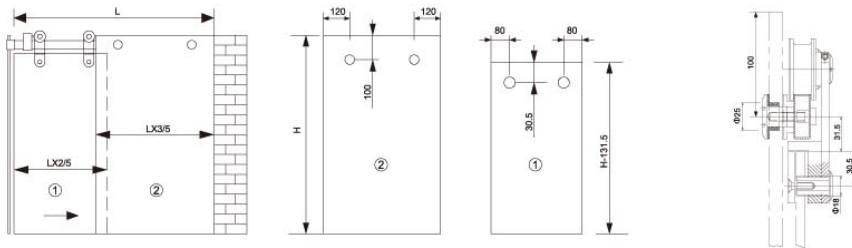
Installing Application

■ Finish:Chrome, Satin



40X15 installation of square pipe

40X15 Sectional installation of square pipe



## GLX-7007

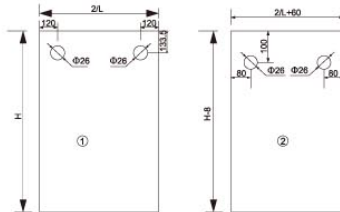
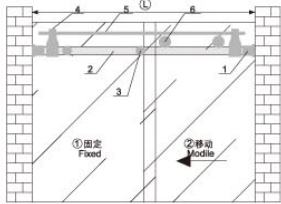
■ Finish: Chrome, Satin

Installing Application



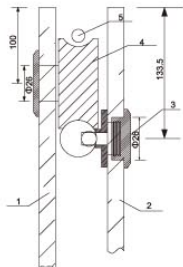
■ Above application is just for reference, will be changed according to the actual scene.

Installation of  $\Phi 22$  pipe bathroom hanging wheel

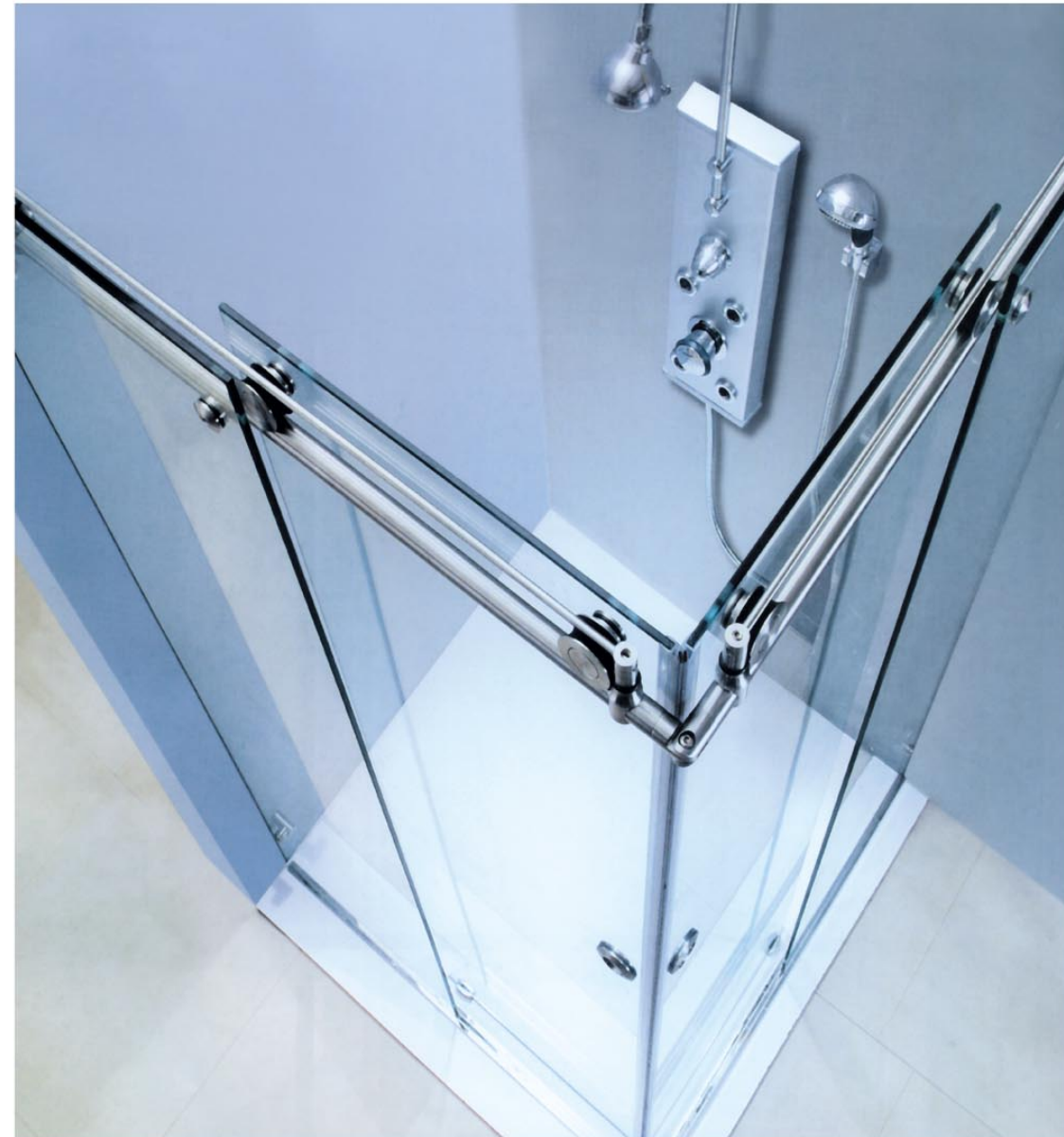


1. (Header) 2. ( $\Phi 22$  Tube guide) 3. (Pipe clamp)  
4. (Locator) 5. ( $\Phi 8$  The jump bar) 6. (Eccentric)

Sectional installation of  $\Phi 22$  pipe bathroom hanging wheel



1. Activity of glass  
2. Fixed glass  
3. Pipe clamp  
4. Eccentric  
5.  $\Phi 8$  The jump bar





## GLX-7008

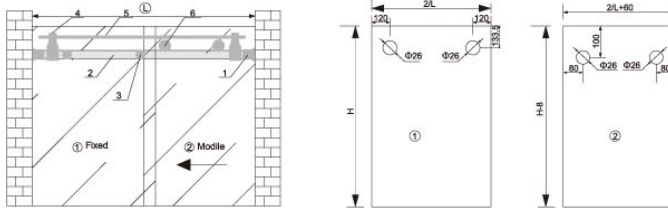
Installing Application

■ Finish:Chrome, Satin



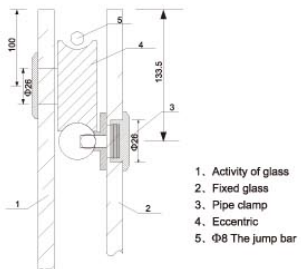
● Above application is just for reference, will be changed according to the actual scene.

Installation of  $\Phi 22$  pipe bathroom hanging wheel



1. (Header)
2. ( $\Phi 22$  Tube guide)
3. (Pipe clamp)
4. (Locator)
5. ( $\Phi 8$  The jump bar)
6. (Eccentric)

Sectional installation of  $\Phi 22$  pipe bathroom hanging wheel



1. Activity of glass
2. Fixed glass
3. Pipe clamp
4. Eccentric
5.  $\Phi 8$  The jump bar



## GLX-7009

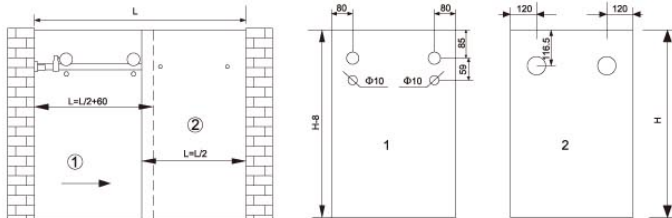
Installing Application

■ Finish:Chrome, Satin

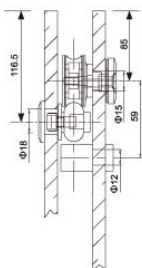


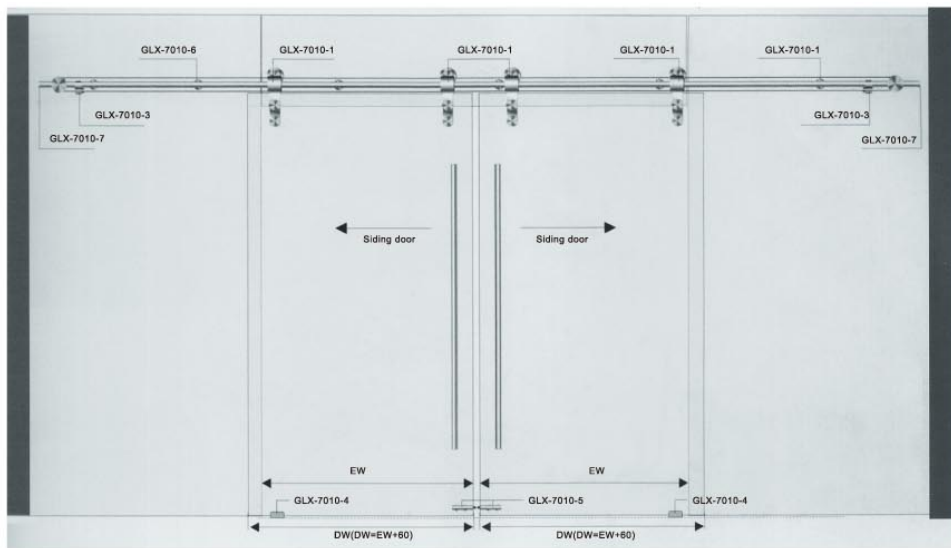
◆ Above application is just for reference, will be changed according to the actual scene.

30X15 Installation indication of elliptical pipe



30X15 Sectional installation indication of elliptical pipe





**GLX-7010**



GLX-7010-1



GLX-7010-2



GLX-7010-3



GLX-7010-4



GLX-7010-5



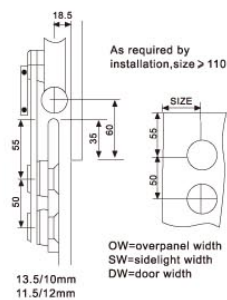
GLX-7010-6



GLX-7010-7



GLX-7010-8

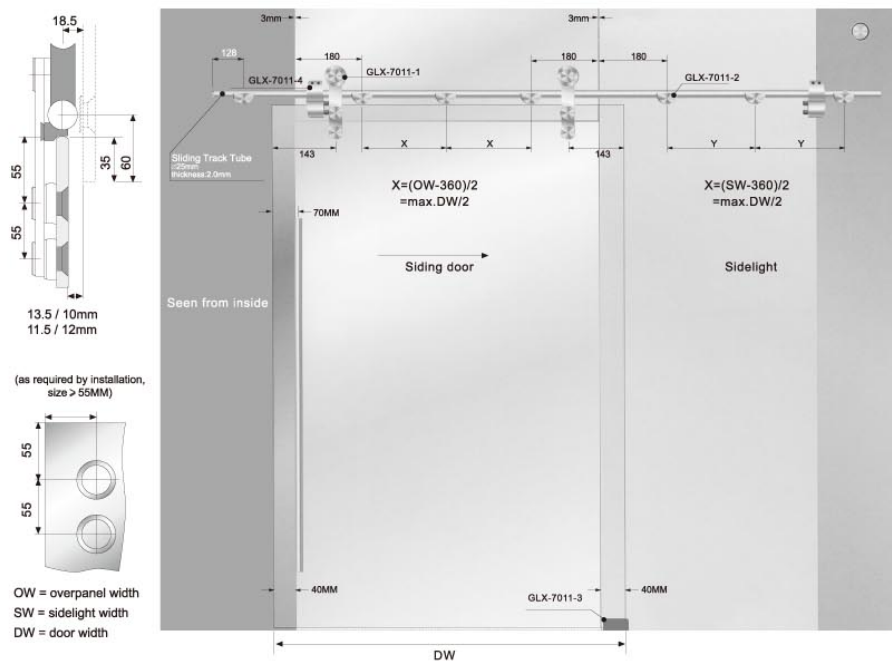


Opening	Entry width	Door width	Tube length
910-1010mm	800-900mm	960-1060mm	2038mm
1010-1110mm	800-1000mm	1060-1160mm	2238mm
1110-1210mm	1000-1100mm	1160-1260mm	2438mm
1210-1310mm	1100-1200mm	1260-1360mm	2638mm



Attentions  
The distance for clamp fixing for track wall fixing:  
1.Weight80kg,max-distance between the clamps=1/2the width of the door;  
2.Weight80kg-120kg,max-distance between the clamps=1/3the width of the door;  
3.Weight120kg-150kg,max-distance between the clamps=1/4the width of the door.





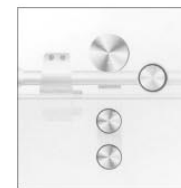
Daylight opening	Entry width	Door width	Tube length
910-1010mm	800-900mm	880-980mm	2038mm
1010-1110mm	900-1000mm	980-1080mm	2238mm
1110-1210mm	1000-1100mm	1080-1180mm	2438mm
1210-1310mm	1100-1200mm	1180-1280mm	2638mm

The distance for clamp fixing for track, wall fixing:

- 1.Weight 80kg;max-distance between the clamps=1/2 the width of the door;
- 2.Weight 80kg-120kg;max-distance between the clamps=1/3 the width of the door;
- 3.Weight 120kg-150kg;max-distance between the clamps=1/4 the width of the door.



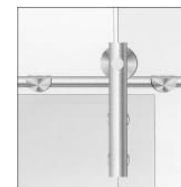
GLX-7012



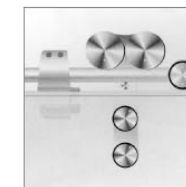
GLX-7013



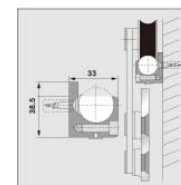
GLX-7014



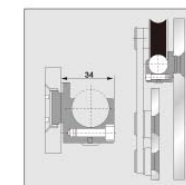
GLX-7015



GLX-7016 PW Connector



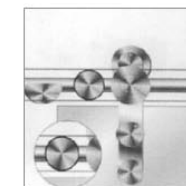
GLX-7017

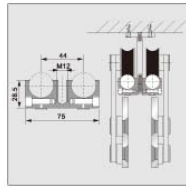


GLX-7018

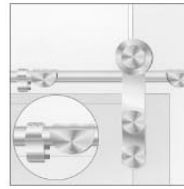


GLX-7019 Sliding door stop

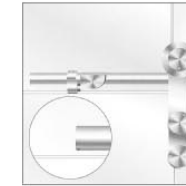




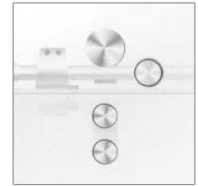
GLX-7020 Clamp fixing for track



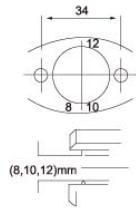
GLX-7021 Sliding door stop



GLX-7028 Pipe end



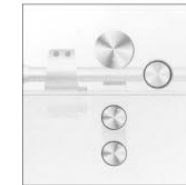
GLX-7029 Pipe end



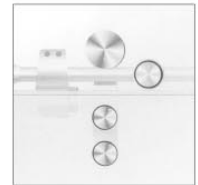
GLX-7022  
Floor guide



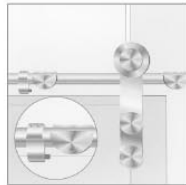
GLX-7023 Floor guide



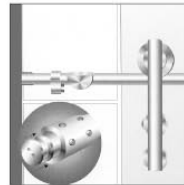
GLX-7030 Pipe end



GLX-7031 Pipe end



GLX-7024



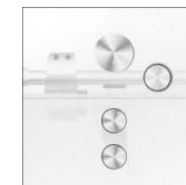
GLX-7025 PW Connector



GLX-7026 G/G



GLX-7027 T type fixed fitting



GLX-7032 Pipe end



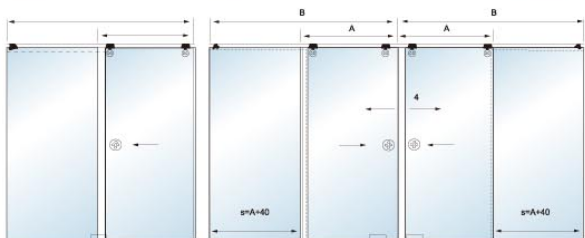
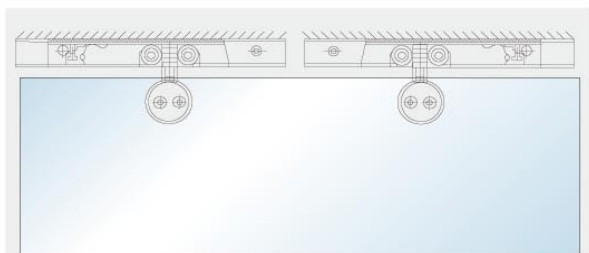
Use the tool for installing and  
backout glass connection

GLX-7033 Glass connector system tools



**GLX-7034**  
Sliding door wheel  
Maximum loading: 120 kg  
Door thickness: 10-12mm

Fitting



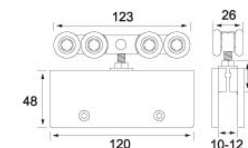
Selection of the aluminum rail



**GLX-7035**

Sliding wheel

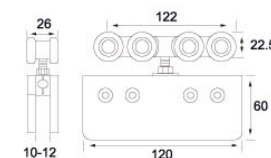
Maximum loading: 120kg/8 wheels; 100kg/4 wheels



**GLX-7036**

Sliding wheel

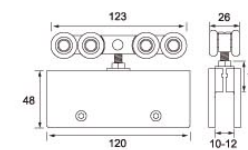
Maximum loading: 120kg/8 wheels; 100kg/4 wheels



**GLX-7037**

Sliding wheel

Maximum loading: 120kg/8 wheels; 100kg/4 wheels

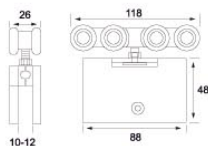




GLX-7038

**Sliding wheel**

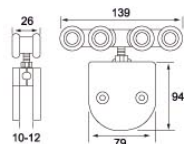
Maximun loading: 120kg/8 wheels; 100kg/4 wheels



GLX-7039

**Sliding wheel**

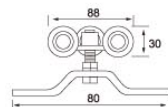
Maximun loading: 120kg/8 wheels; 100kg/4 wheels



GLX-7040

**Sliding wheel**

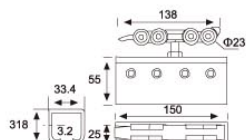
Maximun loading: 60kg



GLX-7041

**Sliding wheel**

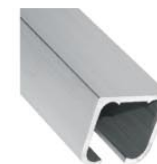
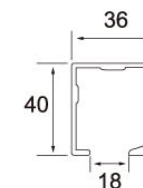
Maximun loading: 120kg/8 wheels; 100kg/4 wheels



GLX-7042

**Sliding rail**

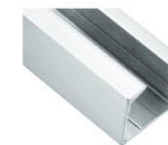
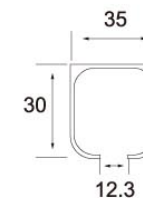
Maximun loading: 120kg/8 wheels; 100kg/4 wheels



GLX-7043

**Sliding rail**

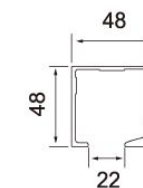
Maximun loading: 120kg/8 wheels; 100kg/4 wheels



GLX-7044

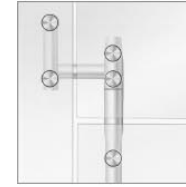
**Sliding rail**

Maximun loading: 120kg/8 wheels; 100kg/4 wheels

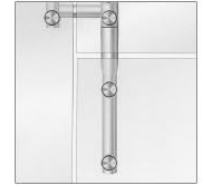




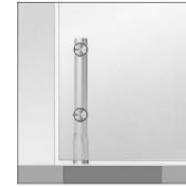
**MANET DOOR SYSTEM  
SERIES**



GLX-7045 L-shape G/G connector



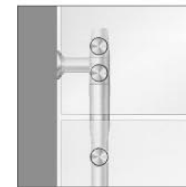
GLX-7046 Door Top pivot pole



GLX-7047 Door Bottom pivot (can provide different types of spring connector)



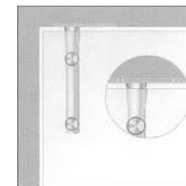
GLX-7048 Over panel



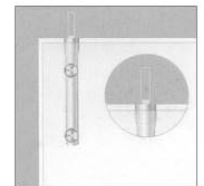
GLX-7049 T-over panel



GLX-7050 L-over panel



GLX-7051 Upper-wall pivot



GLX-7052 Upper-wall pivot





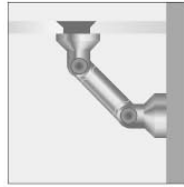
GLX-7053 Lower axle



GLX-7054 Top axle



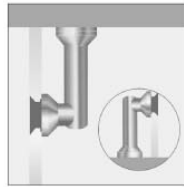
GLX-7055 G/G corner connector



GLX-7056 G/W corner connector



GLX-7057 G/W corner connector



GLX-7058 G/W corner connector



GLX-7059 Double G/G connector



GLX-7060 G/W connector



GLX-7061



GLX-7062



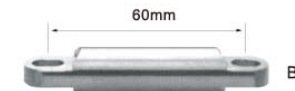
GLX-7063



GLX-7064



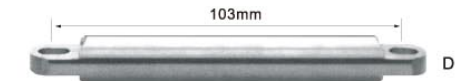
A



B



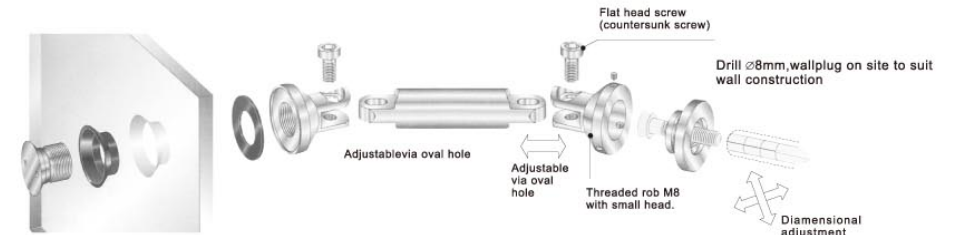
C



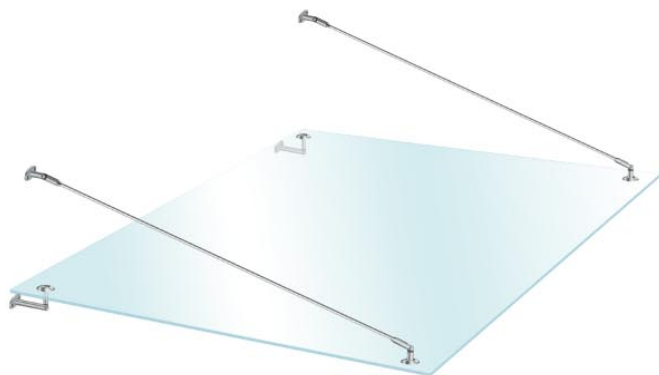
D

GLX-7065 Connecting rod

COMPONENTS AND ASSEMBLY OF THE WALL FIXING



For glass/glass corner connectors for 10mm and 12mm thick toughened glass.



GLX-7066  
Glass/Wall connector



GLX-7067  
Wall/Cable Connector



GLX-7068  
Glass/Cable Connector



# HANDRAIL ACCESSORIES SERIES



GLX-8001



GLX-8002



GLX-8003



GLX-8016

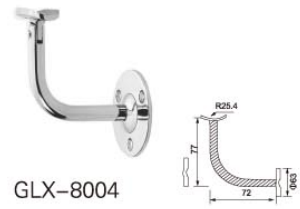


GLX-8017



GLX-8018

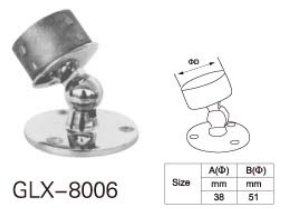
Size	A(Φ)	B
25	25.4	41
32	31.8	53
38	38.1	62
51	50.8	70
63	63.5	87
76	76.2	110



GLX-8004



GLX-8005



GLX-8006



GLX-8019

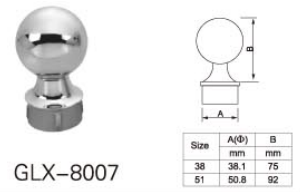


GLX-8020

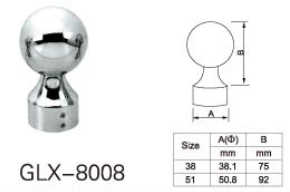


GLX-8021

Size	A(Φ)	B
38	38.1	55
51	50.8	80



GLX-8007



GLX-8008



GLX-8009



GLX-8022

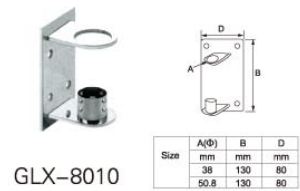


GLX-8023

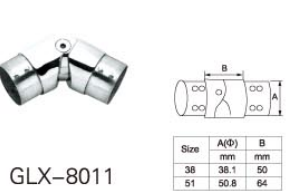


GLX-8024

Size	A(Φ)	B	C(Φ)
38	38.1	16	85
51	50.8	16	85
76	76.2	16	105



GLX-8010



GLX-8011



GLX-8012



GLX-8025



GLX-8026



GLX-8027

Size	A(Φ)	B	C(Φ)
38	38.1	16	85
51	50.8	16	85
76	76.2	16	105



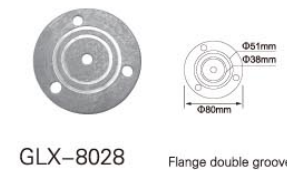
GLX-8013



GLX-8014



GLX-8015



GLX-8028

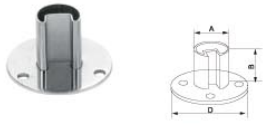


GLX-8029



GLX-8030

Size	C(Φ)
25	25.4
38	38.1
51	50.8



Size	A(Φ)	B	D(Φ)
	mm	mm	mm
38	38.1	90	70
51	50.8	120	90

GLX-8031



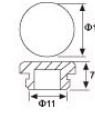
Size	A(Φ)	B	D(Φ)
	mm	mm	mm
51	50.8	45	91
76	76.2	45	115

GLX-8032

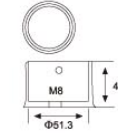


Size	A(Φ)	B	D(Φ)
	mm	mm	mm
51	50.8	45	91
76	76.2	45	115

GLX-8033



GLX-8046

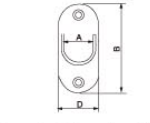


GLX-8047



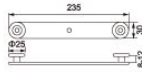
Size	A(Φ)	B
	mm	mm
25	25.4	9
32	31.8	9
38	38.1	9
51	50.8	15
63	63.5	20
76	76.2	25

GLX-8048



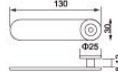
Size	A(Φ)	B	D(Φ)
	mm	mm	mm
19	19	60	28.5
25	25.4	76	36.5
38	38.1	80	48

GLX-8034



Size	A(Φ)	B
	mm	mm
25	25.4	41
32	31.8	53
38	38.1	62
51	50.8	70
63	63.5	87
76	76.2	110

GLX-8035

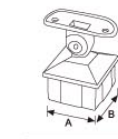


Size	A(Φ)	B
	mm	mm
25	25.4	41
32	31.8	53
38	38.1	62
51	50.8	70
63	63.5	87
76	76.2	110

GLX-8036



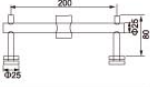
GLX-8049



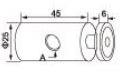
GLX-8050



GLX-8051

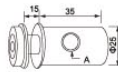


GLX-8037



Size	A(Φ)	B
	mm	mm
25	25.4	41
32	31.8	53
38	38.1	62
51	50.8	70
63	63.5	87
76	76.2	110

GLX-8038



Size	A(Φ)	B
	mm	mm
25	25.4	41
32	31.8	53
38	38.1	62
51	50.8	70
63	63.5	87
76	76.2	110

GLX-8039

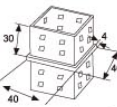


Size	A	B
	mm	mm
40	40	40
50	50	50

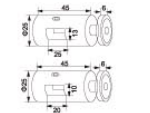
GLX-8052



GLX-8053

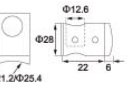


GLX-8054



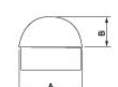
Size	A(Φ)	B
	mm	mm
25	25.4	41
32	31.8	53
38	38.1	62
51	50.8	70
63	63.5	87
76	76.2	110

GLX-8040



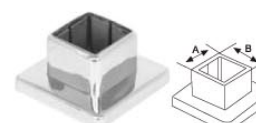
Size	A(Φ)	A(Φ)	A(Φ)
	mm	mm	mm
F	Flat	10	18
51	38.1	12	20
63	50.8	16	25

GLX-8041



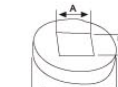
Size	A(Φ)	B
	mm	mm
38	38.1	24
51	50.8	30
63	63.5	37

GLX-8042

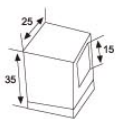


Size	A	B
	mm	mm
40	40	40
50	50	50

GLX-8055



GLX-8056

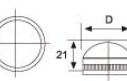


GLX-8057



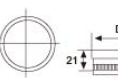
Size	A(Φ)	B
	mm	mm
32	31.8	31.8
38	38.1	37.8
51	50.8	50.8
76	76.2	76.8

GLX-8043



Size	A(Φ)	D(Φ)
	mm	mm
38	38.1	76
51	50.8	91

GLX-8044

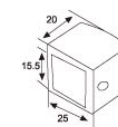


Size	D(Φ)
	mm
38	38.1
51	50.8

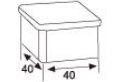
GLX-8045



GLX-8058



GLX-8059



GLX-8060





**GLX-8076**

Materials: Stainless steel  
Size(850mm)  
PSS/SSS



**GLX-8077**

Materials: Stainless steel  
Size(850mm)  
PSS/SSS



**GLX-8078**

Materials: Stainless steel  
Size(850mm)  
PSS/SSS



**GLX-8079**

Materials: Stainless steel  
Size(850mm)  
PSS/SSS



**GLX-8080**

Materials: Stainless steel  
Size(850mm)  
PSS/SSS



**GLX-8086**

Materials: Stainless steel  
Size(850mm)  
PSS/SSS



**GLX-8087**

Materials: Stainless steel  
Size(850mm)  
PSS/SSS



**GLX-8088**

Materials: Stainless steel  
Size(850mm)  
PSS/SSS



**GLX-8089**

Materials: Stainless steel  
Size(850mm)  
PSS/SSS



**GLX-8090**

Materials: Stainless steel  
Size(850mm)  
PSS/SSS



**GLX-8091**

Materials: Stainless steel  
Size(850mm)  
PSS/SSS



**GLX-8081**

Materials: Stainless steel  
Size(850mm)  
PSS/SSS



**GLX-8082**

Materials: Stainless steel  
Size(850mm)  
PSS/SSS



**GLX-8083**

Materials: Stainless steel  
Size(850mm)  
PSS/SSS



**GLX-8084**

Materials: Stainless steel  
Size(850mm)  
PSS/SSS



**GLX-8085**

Materials: Stainless steel  
Size(850mm)  
PSS/SSS



**GLX-8092**

Materials: Stainless steel  
Size(850mm)  
PSS/SSS



**GLX-8093**

Materials: Stainless steel  
Size(850mm)  
PSS/SSS



**GLX-8094**

Materials: Stainless steel  
Size(850mm)  
PSS/SSS



**GLX-8095**

Materials: Stainless steel  
Size(850mm)  
PSS/SSS



**GLX-8096**

Materials: Stainless steel+wood  
Size(850mm)  
PSS/SSS



**GLX-8097**

Materials: Stainless steel+wood  
Size(850mm)  
PSS/SSS



**GLX-8098**  
Materials: Aluminum  
Size(850mm)



**GLX-8099**  
Materials: Aluminum  
Size(850mm)



**GLX-8100**  
Materials: Aluminum  
Size(850mm)



**GLX-8101**  
Materials: Aluminum  
Size(850mm)



**GLX-8102**  
Materials: Aluminum  
Size(850mm)



**GLX-8103**  
Materials: Aluminum  
Size(850mm)



**GLX-8104**  
Materials: Aluminum  
Size(850mm)



**GLX-8105**  
Materials: Aluminum  
Size(850mm)



**GLX-8106**  
Materials: Aluminum  
Size(850mm)



**GLX-8107**  
Materials:  
Aluminum+wood  
Size(850mm)



**GLX-8108**  
Materials:  
Aluminum+wood  
Size(850mm)

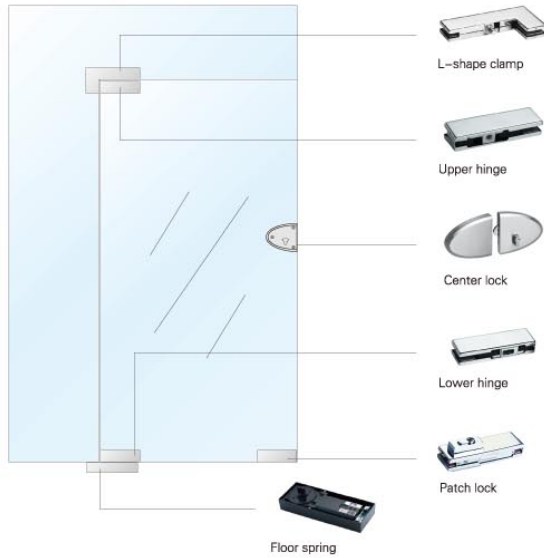


**GLX-8109**  
Materials:  
Aluminum+wood  
Size(850mm)



# GLASS DOOR LOCK SERIES

GLASS MUST CHOOSE TOUGHENED GLASS



GLASSIX Series glass door lock are high-end building and decorative hardware fittings manufactured by GLASSIX Hardware Enterprise. The products feature elegant looks, suitable for hotels, stores, office buildings for common and tempered glass doors.

GLASSIX Series glass door lock products realize technical compatibility of different standard parts, and achieve perfect application effects. Due to safety, practicality and excellent quality, the products are highly recommended by users.



**GLX-9003**  
Materials: Stainless steel / Iron  
Finish: Chrome,Satin  
Door thickness:10-12mm  
Tempered glass door



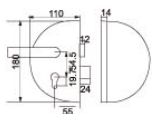
**GLX-9004**  
Materials: Stainless steel / Iron  
Finish: Chrome,Satin  
Door thickness:10-12mm  
Tempered glass door



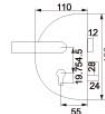
**GLX-9005**  
Materials: Stainless steel / Iron  
Finish: Chrome,Satin  
Door thickness:10-12mm  
Tempered glass door



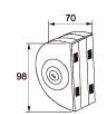
**GLX-9006**  
Materials: Stainless steel / Iron  
Finish: Chrome,Satin  
Door thickness:10-12mm  
Tempered glass door



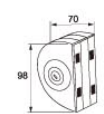
**GLX-9001**  
Materials: Stainless steel / Iron  
Finish: Chrome,Satin  
Door thickness:10-12mm  
Tempered glass door



**GLX-9002**  
Materials: Stainless steel / Iron  
Finish: Chrome,Satin  
Door thickness:10-12mm  
Tempered glass door

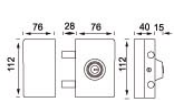


**GLX-9007**  
Materials: Stainless steel / Iron  
Finish: Chrome,Satin  
Door thickness:10-12mm  
Tempered glass door

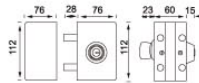


**GLX-9008**  
Materials: Stainless steel / Iron  
Finish: Chrome,Satin  
Door thickness:10-12mm  
Tempered glass door

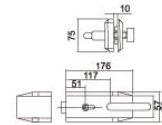




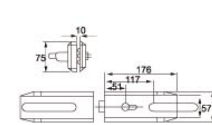
**GLX-9009**  
Materials: Stainless steel / Iron  
Finish: Chrome,Satin  
Door thickness:10-12mm  
Tempered glass door



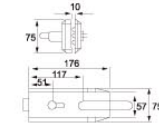
**GLX-9010**  
Materials: Stainless steel / Iron  
Finish: Chrome,Satin  
Door thickness:10-12mm  
Tempered glass door



**GLX-9015**

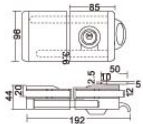


**GLX-9016**

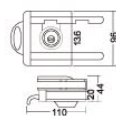


**GLX-9017**

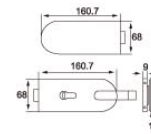
Materials: Zinc alloy  
Finish: Chrome,Satin  
Door thickness:10-12mm  
Tempered glass door



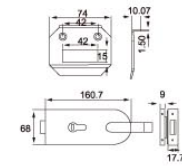
**GLX-9011**  
Materials: Stainless steel / Iron  
Finish: Chrome,Satin  
Door thickness:10-12mm  
Tempered glass door



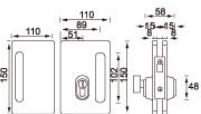
**GLX-9012**  
Materials: Stainless steel / Iron  
Finish: Chrome,Satin  
Door thickness:10-12mm  
Tempered glass door



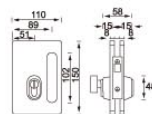
**GLX-9018**  
Materials: Zinc alloy  
Finish: Chrome,Satin  
Door thickness:10-12mm  
Tempered glass door



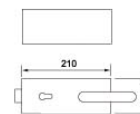
**GLX-9019**  
Materials: Zinc alloy  
Finish: Chrome,Satin  
Door thickness:10-12mm  
Tempered glass door



**GLX-9013**  
Materials: Stainless steel  
Finish: Chrome,Satin  
Door thickness:10-12mm  
Tempered glass door



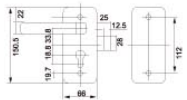
**GLX-9014**  
Materials: Stainless steel  
Finish: Chrome,Satin  
Door thickness:10-12mm  
Tempered glass door



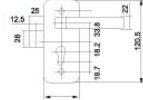
**GLX-9020**  
Materials: Zinc alloy  
Finish: Chrome,Satin  
Door thickness:10-12mm  
Tempered glass door



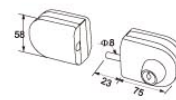
**GLX-9021**  
Materials: Zinc alloy  
Finish: Chrome,Satin  
Door thickness:10-12mm  
Tempered glass door



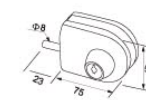
**GLX-9022**  
Materials: Stainless steel / Iron  
Finish: Chrome,Satin  
Door thickness:10-12mm  
Tempered glass door



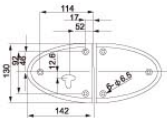
**GLX-9023**  
Materials: Stainless steel / Iron  
Finish: Chrome,Satin  
Door thickness:10-12mm  
Tempered glass door



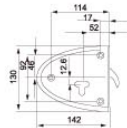
**GLX-9028**  
Materials: Stainless steel / Iron  
Finish: Chrome,Satin  
Door thickness:10-12mm  
Tempered glass door



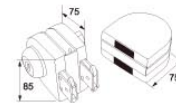
**GLX-9029**  
Materials: Stainless steel / Iron  
Finish: Chrome,Satin  
Door thickness:10-12mm  
Tempered glass door



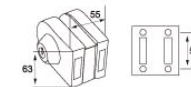
**GLX-9024**  
Materials: Zinc alloy  
Finish: Chrome,Satin  
Door thickness:10-12mm  
Tempered glass door



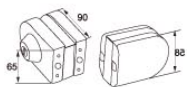
**GLX-9025**  
Materials: Zinc alloy  
Finish: Chrome,Satin  
Door thickness:10-12mm  
Tempered glass door



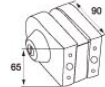
**GLX-9030**  
Materials: Stainless steel / Iron  
Finish: Chrome,Satin  
Door thickness:10-12mm  
Tempered glass door



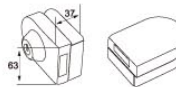
**GLX-9031**  
Materials: Stainless steel / Iron  
Finish: Chrome,Satin  
Door thickness:10-12mm  
Tempered glass door



**GLX-9026**  
Materials: Stainless steel / Iron  
Finish: Chrome,Satin  
Door thickness:10-12mm  
Tempered glass door



**GLX-9027**  
Materials: Stainless steel / Iron  
Finish: Chrome,Satin  
Door thickness:10-12mm  
Tempered glass door

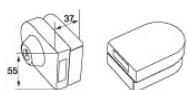


**GLX-9032**  
Materials: Stainless steel / Iron  
Finish: Chrome,Satin  
Door thickness:10-12mm  
Tempered glass door



**GLX-9033**  
Materials: Stainless steel / Iron  
Finish: Chrome,Satin  
Door thickness:10-12mm  
Tempered glass door

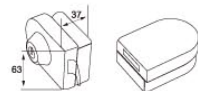
**GLASS DOOR LOCK SERIES**



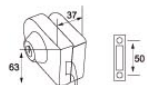
**GLX-9034**  
Materials: Stainless steel / Iron  
Finish: Chrome, Satin  
Door thickness: 10-12mm  
Tempered glass door



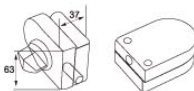
**GLX-9035**  
Materials: Stainless steel / Iron  
Finish: Chrome, Satin  
Door thickness: 10-12mm  
Tempered glass door



**GLX-9036**  
Materials: Stainless steel / Iron  
Finish: Chrome, Satin  
Door thickness: 10-12mm  
Tempered glass door



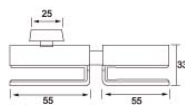
**GLX-9037**  
Materials: Stainless steel / Iron  
Finish: Chrome, Satin  
Door thickness: 10-12mm  
Tempered glass door



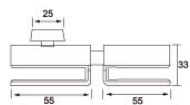
**GLX-9038**  
Materials: Stainless steel / Iron  
Finish: Chrome, Satin  
Door thickness: 10-12mm  
Tempered glass door



**GLX-9039**  
Materials: Stainless steel / Iron  
Finish: Chrome, Satin  
Door thickness: 10-12mm  
Tempered glass door



**GLX-9040**  
Materials: Brass  
Finish: Chrome, Satin  
Door thickness: 10-12mm  
Tempered glass door



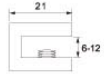
**GLX-9041**  
Materials: Brass  
Finish: Chrome, Satin  
Door thickness: 10-12mm  
Tempered glass door



**GLASS ACCESSORIES  
SERIES**



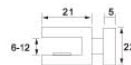
Materials: Zinc alloy  
Finish: Chrome, Safin  
Glass thick: 6-8, 10-12mm  
Available for: Glass shelf



**GLX-1101**  
Single glass clamp



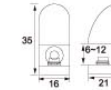
Materials: Zinc alloy  
Finish: Chrome, Safin  
Glass thick: 6-8, 10-12mm  
Available for: Glass shelf



**GLX-1102**  
Single glass clamp



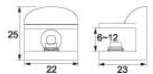
Materials: Zinc alloy  
Finish: Chrome, Safin  
Antique copper, Gold, Drawbench  
Glass thick: 6-8mm/8-12mm  
Available for: Glass shelf



**GLX-1109**  
Glass clamp



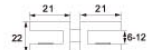
Materials: Zinc alloy  
Finish: Chrome, Safin  
Antique copper, Gold, Drawbench  
Glass thick: 6-8mm/8-12mm  
Available for: Glass shelf



**GLX-1110**  
Glass clamp



Materials: Zinc alloy  
Finish: Chrome, Safin  
Glass thick: 6-8, 10-12mm  
Available for: Glass shelf



**GLX-1103**  
Double glass clamp



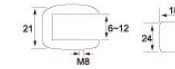
Materials: Zinc alloy  
Finish: Chrome, Safin  
Glass thick: 8-10mm  
Available for: Glass shelf



**GLX-1104**  
Single glass clamp



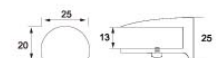
Materials: Zinc alloy  
Finish: Chrome  
Glass thick: 6-8mm/10-12mm  
Available for: Glass shelf



**GLX-1111**  
Glass clamp



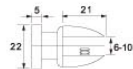
Materials: Zinc alloy  
Finish: Chrome  
Glass thick: 10-12mm  
Available for: Glass shelf



**GLX-1112**  
Glass clamp



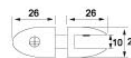
Materials: Zinc alloy  
Finish: Chrome, Safin  
Glass thick: 8-10mm  
Available for: Glass shelf and wooden plywood



**GLX-1105**  
Single glass clamp



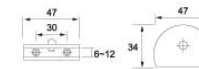
Materials: Zinc alloy  
Finish: Chrome, Safin  
Glass thick: 8-10mm  
Available for: Glass shelf and wooden plywood



**GLX-1106**  
Double glass clamp



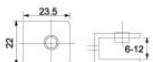
Materials: Stainless steel, Zinc alloy  
Finish: Chrome, Safin  
Glass thick: 8mm/10mm/12mm  
Available for: Glass shelf



**GLX-1113**  
Glass clamp



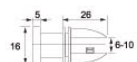
Materials: Zinc alloy  
Finish: Chrome, Antique brass, Antique copper, Gold, Drawbench  
Glass thick: 6-8mm/10-12mm  
Available for: Glass shelf



**GLX-1114**  
Glass clamp



Materials: Zinc alloy  
Finish: Chrome, Safin  
Glass thick: 8-10mm  
Available for: Glass shelf and wooden plywood



**GLX-1107**  
Single glass clamp



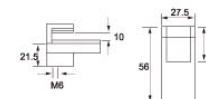
Materials: Zinc alloy  
Finish: Chrome, Safin  
Glass thick: 8-10mm  
Available for: Glass shelf and wooden plywood



**GLX-1108**  
Double glass clamp



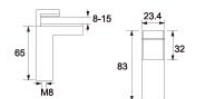
Materials: Zinc alloy  
Finish: Chrome, Safin  
Glass thick: 7-15, 10-25mm  
Available for: Glass shelf



**GLX-1115**  
Glass clamp



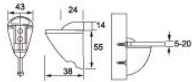
Materials: Zinc alloy  
Finish: Chrome, Safin  
Glass thick: 3-12, 6-20mm  
Available for: Glass shelf



**GLX-1116**  
Glass clamp



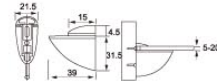
Materials: Zinc alloy  
Finish: Chrome  
Glass thick: 6-8, 10-12mm  
Available for: Glass shelf and wooden plywood



**GLX-1117**  
Glass clamp



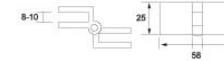
Materials: Zinc alloy  
Finish: Chrome  
Glass thick: 6-8, 10-12mm  
Available for: Glass shelf and wooden plywood



**GLX-1118**  
Glass clamp



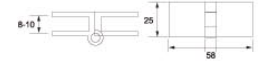
Materials: Brass  
Finish: Chrome, Drawbench  
Glass thick: 8-10mm



**GLX-1125**



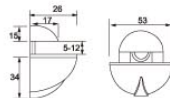
Materials: Brass  
Finish: Chrome, Drawbench  
Glass thick: 8-10mm



**GLX-1126**



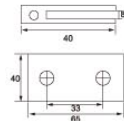
Materials: Zinc alloy  
Finish: Chrome  
Glass thick: 6-8, 10-12mm  
Available for: Glass shelf and wooden plywood



**GLX-1119**  
Glass clamp



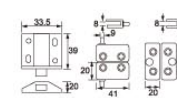
Materials: Zinc alloy  
Finish: Chrome  
Glass thick: 8-10mm  
Available for: Glass cupboard door



**GLX-1120**  
Cabinet hinge



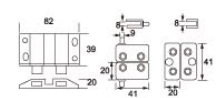
Materials: Iron  
Finish: Chrome  
Glass thick: 8-10mm



**GLX-1127**



Materials: Iron  
Finish: Chrome  
Glass thick: 8-10mm



**GLX-1128**



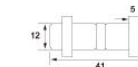
**GLX-1121**  
Aluminum Glass clamp  
Glass thickness: 10mm/12mm



**GLX-1122**  
Aluminum Glass clamp  
Glass thickness: 10mm/12mm



Materials: Iron  
Finish: Chrome  
Available for: Glass shelf and wooden plywood



**GLX-1129**  
Double shelf holder



Materials: Iron  
Finish: Chrome  
Available for: Glass shelf and wooden plywood



**GLX-1130**  
Single shelf holder



**GLX-1123**  
Aluminum Glass clamp  
Glass thickness: 10mm/12mm



**GLX-1124**  
Aluminum Glass clamp  
Glass thickness: 10mm/12mm



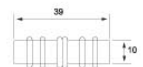
Materials: Iron  
Finish: Chrome  
Available for: Glass shelf and wooden plywood



**GLX-1131**  
Single shelf holder



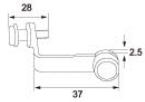
Materials: Iron  
Finish: Chrome  
Available for: Glass shelf and wooden plywood



**GLX-1132**  
Double shelf holder



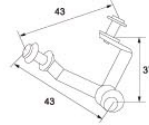
Materials: Iron  
Finish: Chromel  
Available for: Combination of glass



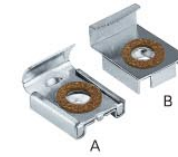
**GLX-1133**  
Glass cabinet spider (2-claw)



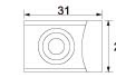
Materials: Iron  
Finish: Chromel  
Available for: Combination of glass



**GLX-1134**  
Glass cabinet spider (3-claw)



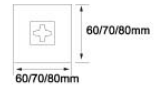
Materials: Iron  
Finish: Chromel  
Glass thick: 6mm



**GLX-1141**  
Hanging mirror clip



Materials: Zinc alloy  
Finish: Ecu  
Glass thick: 60x60, 70x70, 80x80mm  
Available for: Hanging glass



**GLX-1142**  
Glass mirror hanging piece

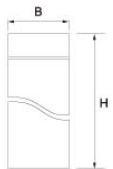


**GLX-1135**



**GLX-1136**

Materials: Steel/Copper/Stainless steel  
Finish: Chrome/ matt nikel/ Titanium



Diameter	Height															
	12mm	22mm	25mm	30mm	40mm	50mm	60mm	70mm	80mm	100mm	120mm	150mm	200mm	250mm	300mm	
16mm			25mm	30mm	40mm	50mm	60mm	70mm	80mm	100mm	120mm	150mm	200mm	250mm	300mm	
18mm			25mm	30mm	40mm	50mm	60mm	70mm	80mm	100mm	120mm	150mm	200mm	250mm	300mm	
19mm			25mm	30mm	40mm	50mm	60mm	70mm	80mm	100mm	120mm	150mm	200mm	250mm	300mm	
22mm			25mm	30mm	40mm	50mm	60mm	70mm	80mm	100mm	120mm	150mm	200mm	250mm	300mm	
25mm			25mm	30mm	40mm	50mm	60mm	70mm	80mm	100mm	120mm	150mm	200mm	250mm	300mm	
30mm			25mm	30mm	40mm	50mm	60mm	70mm	80mm	100mm	120mm	150mm	200mm	250mm	300mm	
40mm			25mm	30mm	40mm	50mm	60mm	70mm	80mm	100mm	120mm	150mm	200mm	250mm	300mm	



Available for: Glass cupboard door

**GLX-1143**  
Cabinet wheel

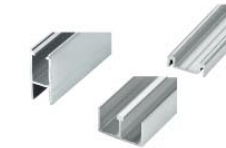


Available for: Glass cupboard door

**GLX-1144**  
Cabinet lock



**GLX-1145**



**GLX-1146**  
Aluminum rail

Materials: Premium bearing, Steel, Nylon  
Finish: Silver with Sand Blast  
Weight Capacity: 10kgs/Door  
Glass thick: 6-8mm  
Standard Packing: 1000 Pairs/Carton



Materials: Zinc alloy  
Finish: Chromel  
Available for: Glass cupboard door

**GLX-1147**  
Cabinet lock

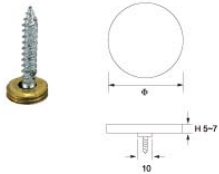


Materials: Zinc alloy  
Finish: Chromel  
Available for: Glass cupboard door

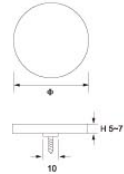
**GLX-1148**  
Cabinet lock



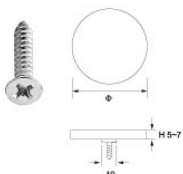
**GLX-1137**  
Mirror cover



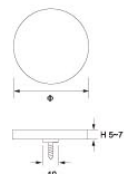
**GLX-1138**  
Mirror cover



**GLX-1139**  
Mirror cover



**GLX-1140**  
Mirror cover



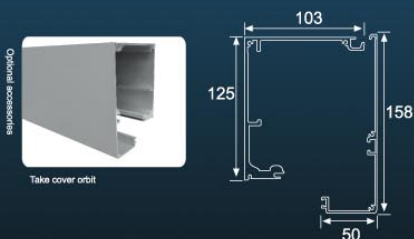
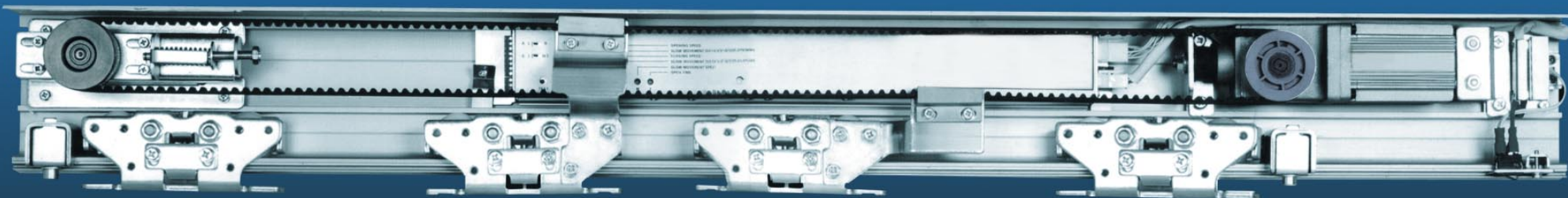
Materials: Zinc alloy  
Finish: Chromel  
Available for: Glass cupboard door

**GLX-1149**  
Cabinet lock



Materials: Zinc alloy  
Finish: Chromel  
Available for: Glass cupboard door

**GLX-1150**  
Cabinet lock



## GLX-1201 AUTOMATIC DOOR SYSTEM

### Technical data

Door configuration: single leaf, Double-leaves  
 Limited Weight:  $\leq 1 \times 150\text{kg}$ ,  $\leq 2 \times 120\text{kg}$   
 Door leaf width: 700-1300mm, 600-1200mm  
 Power voltage: AC 220V  $\pm 10\%$ , 50-60Hz  
 AC110V  $\pm 10\%$ , 50-60Hz  
 Power consumption: < 70W  
 Opening speed: 200-450mm/S (adjustable)  
 Closing speed: 200-450mm/S (adjustable)  
 Hold-open time: 0-9S (adjustable)  
 Manual force: < 40N, < 50N  
 Sensor mode: Various  
 Sliding noise:  $\leq 55\text{Db}$   
 Environment temperature:  $-20 \sim +50^\circ\text{C}$

### Quality assurance

1. The acting-edge technology of microcomputer control system can rapidly and accurately detect the door size, weight and set the best operation parameters to make sure the door works well. And the high intelligent microcomputer has memory, correction functions.
2. DC brushless motor has big torque, long service life and high efficiency; helical gear transmission in the gear box ensures the stable and reliable operation, even used for heavy door, the whole system operates easily.
3. Considerate humanized design: it's safe. During the door closing, if someone or something is in the detection range, the special detection function makes the door reverse. In case of someone push or pull the door, the system recognizes it automatically with no disorder; Manual open/close force is small, when power outage, it's easy to open manually.
4. synchronous belt and roller is made from new materials, wear-resisting and strong, advanced flat-roofed arc transmission makes the drive more stable.
5. Peculiar double-door interlock function, suitable for constant temperature, humidity contour requirements places.
6. Half-open function can save energy consumption in the air conditioning environment.
7. Multiple access control modes for users' choice, the mainframe configures with the central computer work as an integrated systems for access control, attendance, safety monitoring, etc.
8. This drive system is equipped with safe beam interface to satisfy customer's higher safety requirement.
9. Idle pulley is equipped with belt tension regulator. It's easy to adjust the door height and level by adjusting the roller hangers.

# Automatic door

Noiseless structural design for quiet operation, sturdy and durable; Suspension track is made of quality aviation alloy materials, down-holding and dustproof



GLX-1202  
Fingerprint attendance machine



GLX-1203  
Inductive keyboard



GLX-1204  
Electric magnetic lock



GLX-1205  
Electric magnetic lock



GLX-1206  
Single-door magnetic lock



GLX-1207  
Double-door magnetic lock



GLX-1208  
No clamp frame



GLX-1209  
Frame lock



GLX-1210  
Battery



GLX-1211  
Backup battery



GLX-1212  
Touch switch



GLX-1213  
Inductive keyboard



GLX-1214  
Magcard



GLX-1215  
Magcard





STRUCTURAL COMPONENTS FOR MOVABLE  
GLASS PARTITION SYSTEM

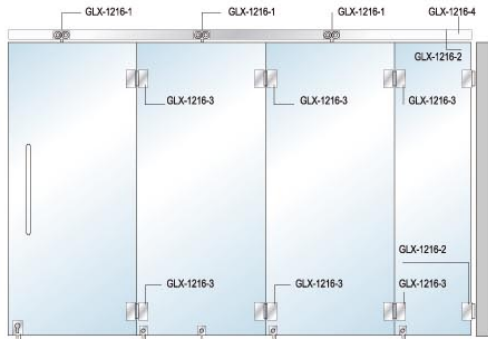


**Excellent system applicable for diversified spaces**

The relevance degree and practicality of glass,with the professional design concepts,are brought to the maximum in conformity with different user demands.Not only each piece of accesories finds full use,but the functionality and reliable technology create the effective,economic and multi-shop applicable spaces.From chain shops,showrooms shopping malls,hotls to notels airports, GLASSIX are sufficient to meet all your requirements.

**GLX-1216**

STRUCTURAL COMPONENTS FOR MOVABLE GLASS PARTITION SYSTEM



GLX-1216-1  
Folding door roller



GLX-1216-2  
Glass to wall hinge



GLX-1216-3  
Glass to glass hinge



GLX-1216-4  
Track



GLX-1216-5  
Corner lock

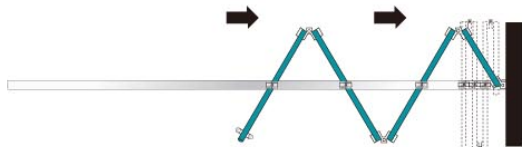


GLX-1216-6  
Glass door bolt



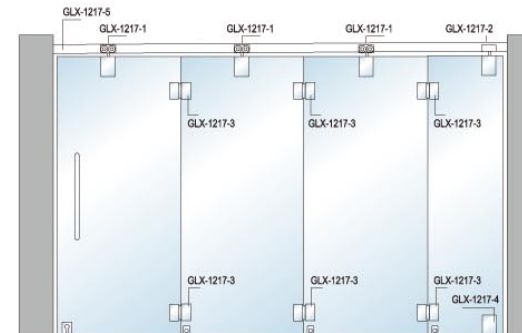
GLX-1216-7  
Bolt sleeve

Max.door leaf height	2500mm	2500mm	2500mm	2500mm
Max.door leaf width	900mm	900mm	900mm	1/2 door hinge +63mm
Max.door leaf load	70kg	70kg	70kg	—



**GLX-1217**

STRUCTURAL COMPONENTS FOR MOVABLE GLASS PARTITION SYSTEM



GLX-1217-1  
Folding door roller



GLX-1217-2  
Glass to glass hinge



GLX-1217-3  
Upper fixing clip



GLX-1217-4  
Lower fixing clip

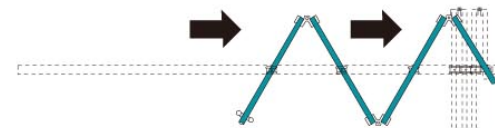


GLX-1217-5  
Track



GLX-1217-6  
Corner patch lock

	Folding door leaf, folding door hanging pulley, and bottom door lock.	Folding door leaf, folding door hanging pulley, and bottom door lock.	Folding door leaf, folding door hanging pulley, and bottom door lock.	End door leaf, equipped with upper and lower fixing clips and bottom bolt.
Max door leaf height	2500mm	2500mm	2500mm	2500mm
Max door leaf width	900mm	900mm	900mm	1/2 door hinge +63mm
Max door leaf load	70kg	70kg	70kg	—



GLX-1217-7  
Glass door bolt



GLX-1217-8  
Bolt sleeve







Exquisite workmanship  
perfect embodiment

Refined and quality assuring process of manufacturing represents the state-of-art technology, giving a clear-cut and thick sense of touch.



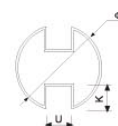
GLX-1401  
40x60/40x80/48x76

GLX-1402  
40x60/40x80/48x76

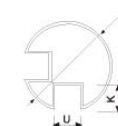
GLX-1403  
12x24/15x30/25x32

GLX-1404  
15x65/20x60/20x80

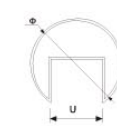
GLX-1405  
25x25/30x30/40x40/50x50



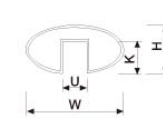
GLX-1406  
Φ50.8 U:15 K:15  
Material: Stainless steel 304



GLX-1407  
Φ50.8 U:15 K:15  
Material: Stainless steel 304

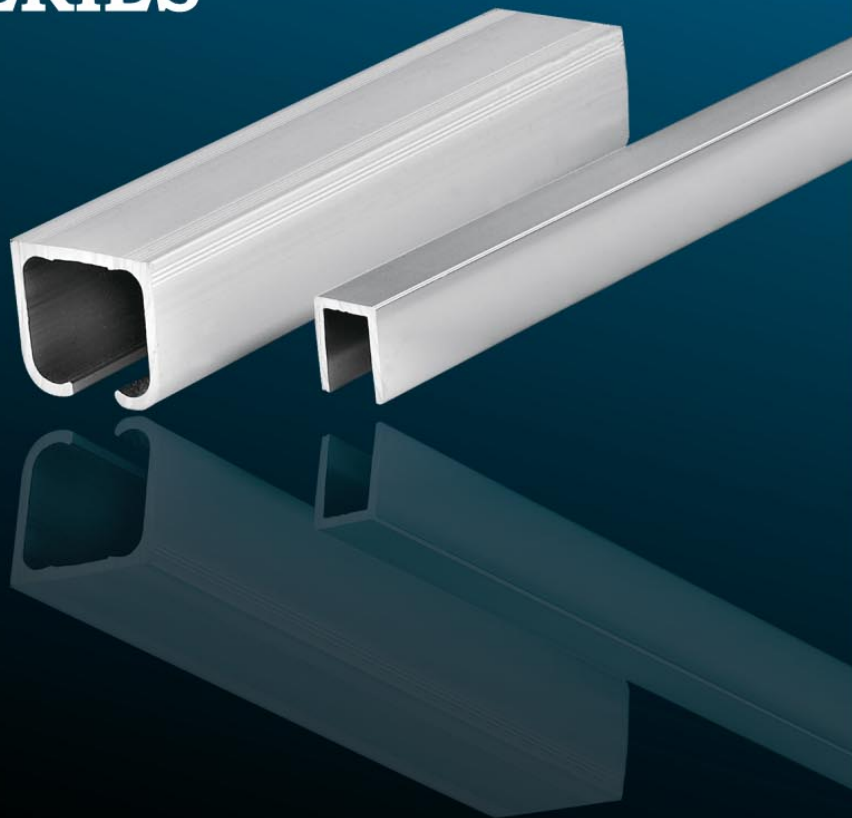


GLX-1408  
Φ38.1 U:15 K:15  
Φ50.8 U:20 K:20  
Material: Stainless steel 304

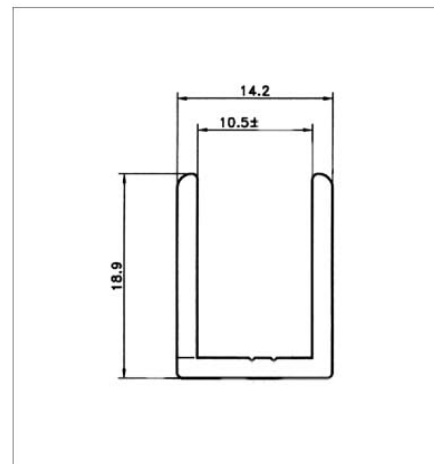


GLX-1409  
W:60 H:30 U:15 K:20  
Material: Stainless steel 304

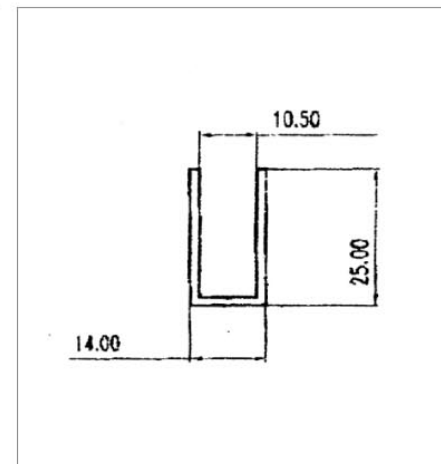
# ALUMINIUM PROFILES SERIES



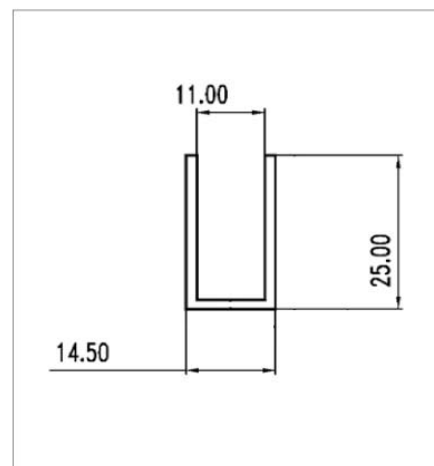
## ALUMINIUM PROFILES



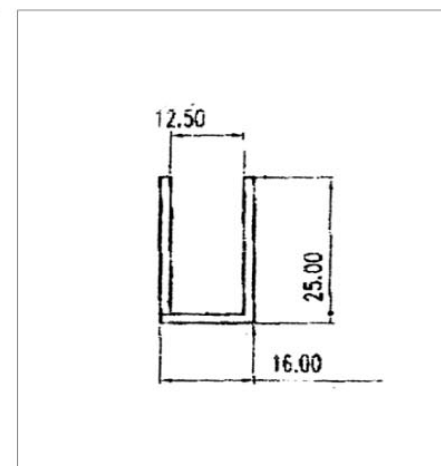
C1814H  
WT/M:0.243 kg/m



U14-25  
WT/M:0.282 kg/m

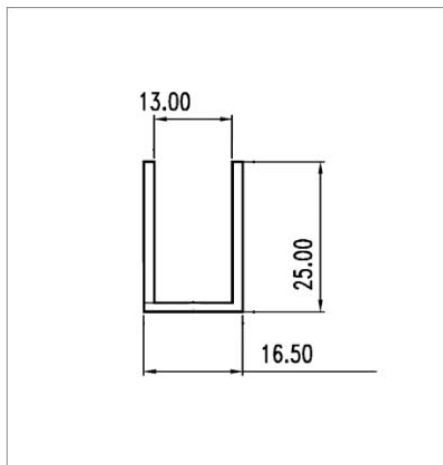


U14.5-25  
WT/M:0.284 kg/m

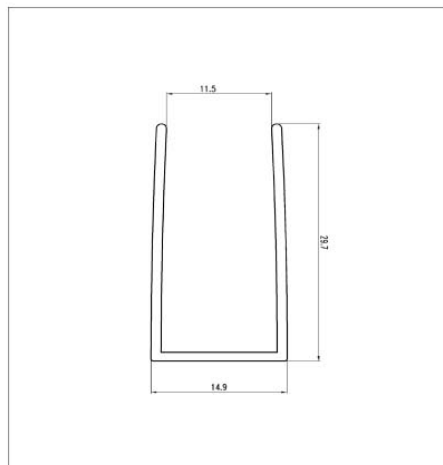


U16-25  
WT/M:0.290 kg/m

ALUMINIUM PROFILES

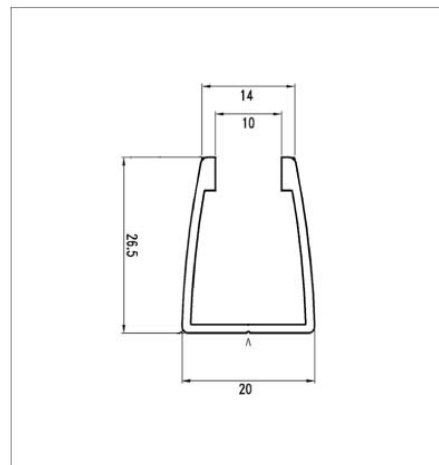


U16.5-25  
WT/M:0.292 kg/m

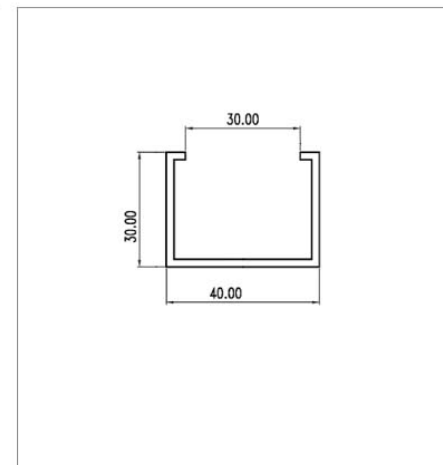


XGG-757  
WT/M:0.217 kg/m

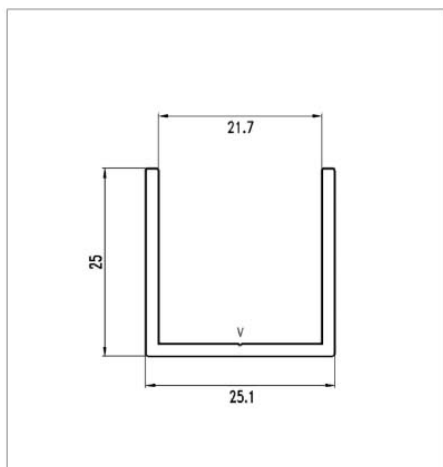
ALUMINIUM PROFILES



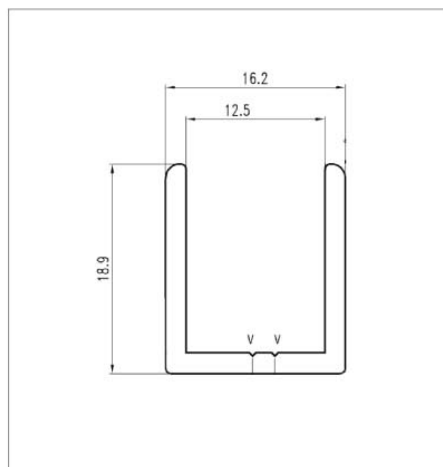
XGJ-087  
WT/M:0.280 kg/m



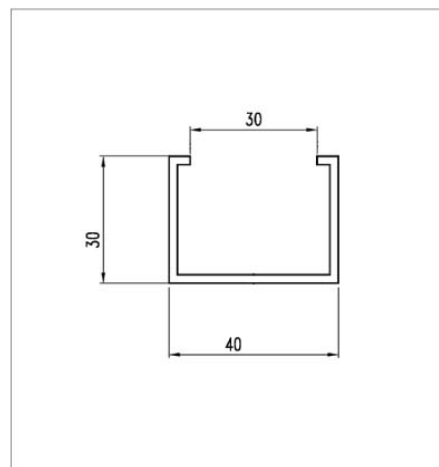
JL3518  
WT/M:0.557 kg/m



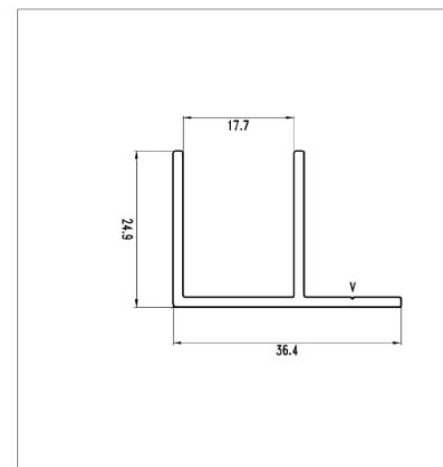
XGG-911  
WT/M:0.331 kg/m



XGJ-021  
WT/M:0.252 kg/m

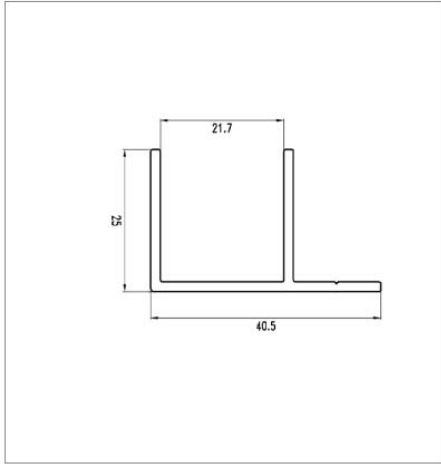


XGG-702  
WT/M:0.555 kg/m

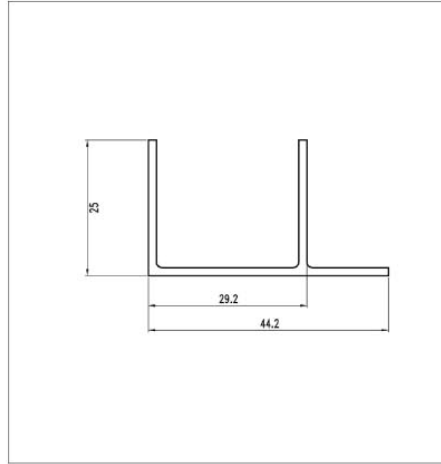


XGG-906  
WT/M:0.361 kg/m

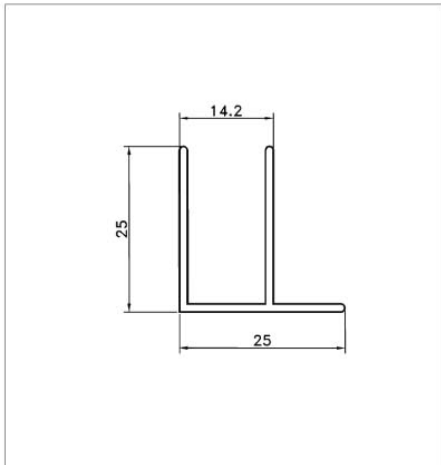
ALUMINIUM PROFILES



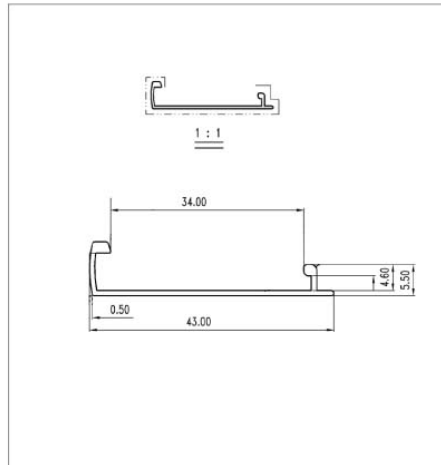
XGG-907  
WT/M:0.402 kg/m



XGJ-083  
WT/M:0.374 kg/m

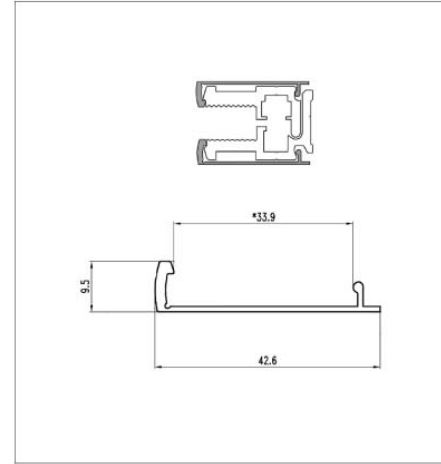


YLJ03069  
WT/M:0.237 kg/m

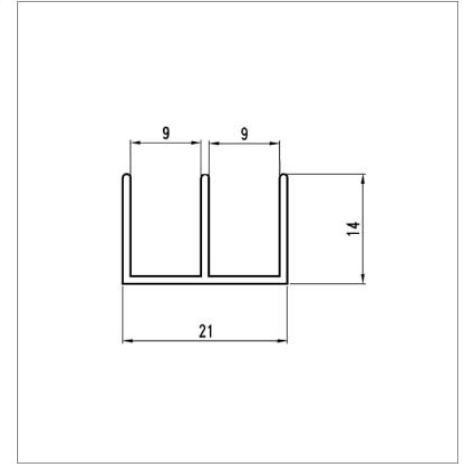


JL3202  
WT/M:0.156 kg/m

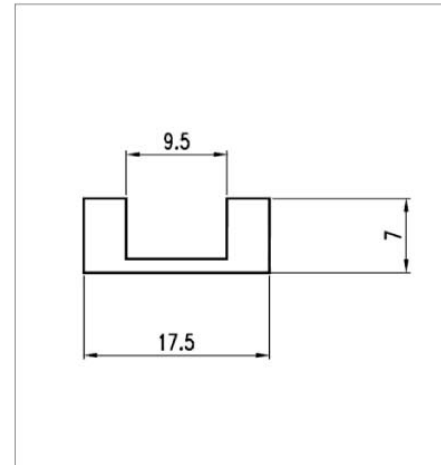
ALUMINIUM PROFILES



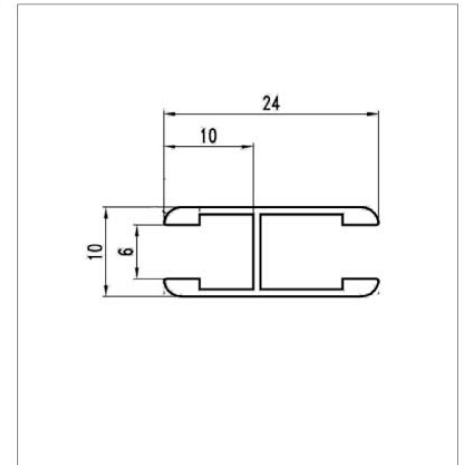
XGG-898  
WT/M:0.180 kg/m



XGJ-090  
WT/M:0.162 kg/m



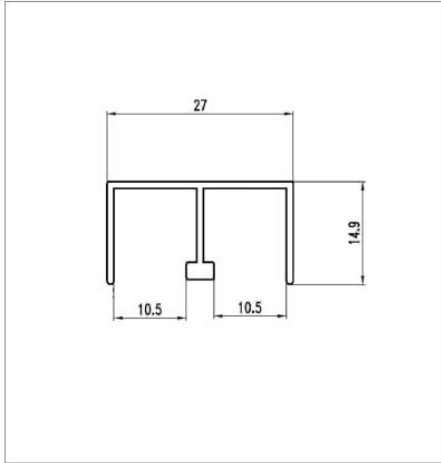
XGJ-088  
WT/M:0.186 kg/m



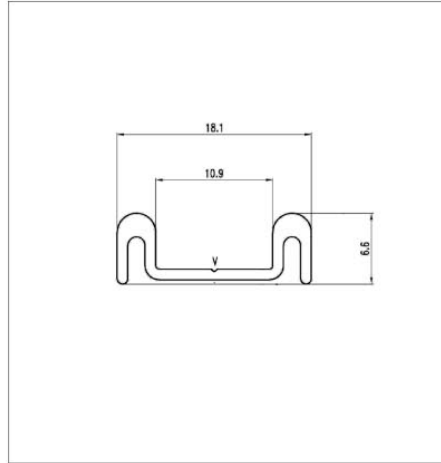
XGJ-089L  
WT/M:0.166 kg/m



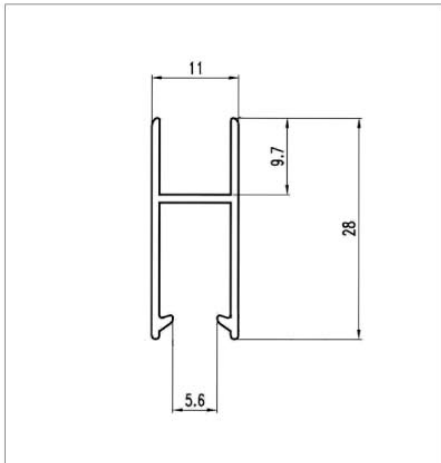
ALUMINIUM PROFILES



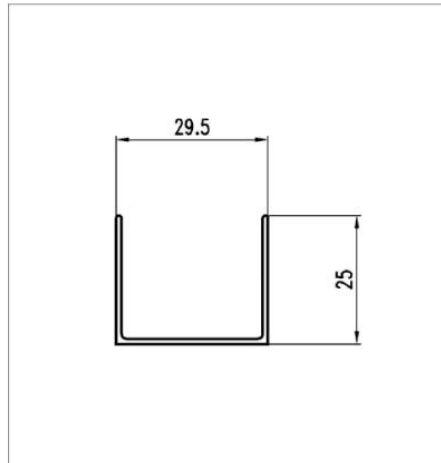
XGJ-100  
WT/M:0.204 kg/m



XGJ-101  
WT/M:0.110 kg/m

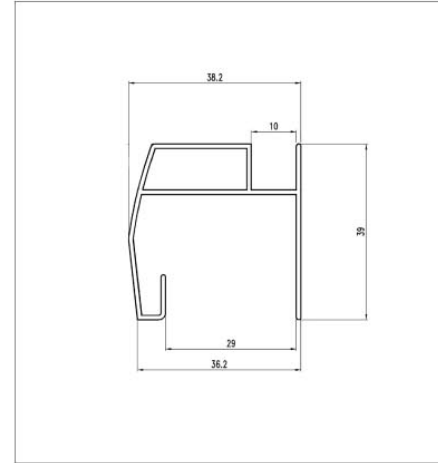


XGJ-102  
WT/M:0.187 kg/m

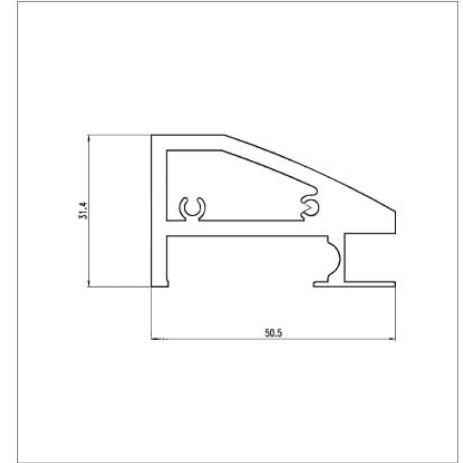


XGJ-093  
WT/M:0.211 kg/m

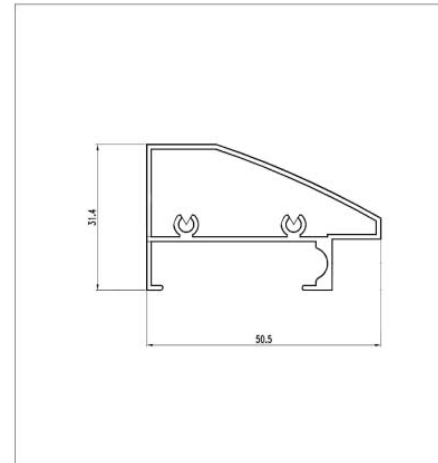
ALUMINIUM PROFILES



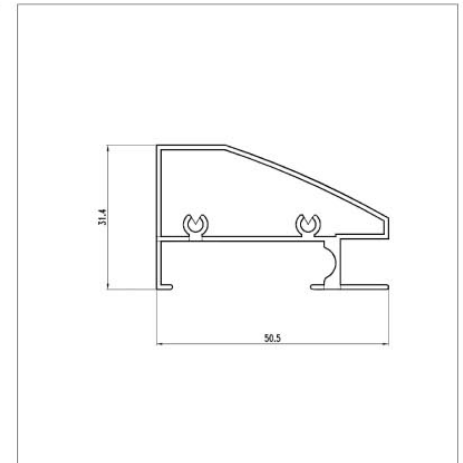
XGJ-092  
WT/M:0.426 kg/m



XGJ-094  
WT/M:1.377 kg/m

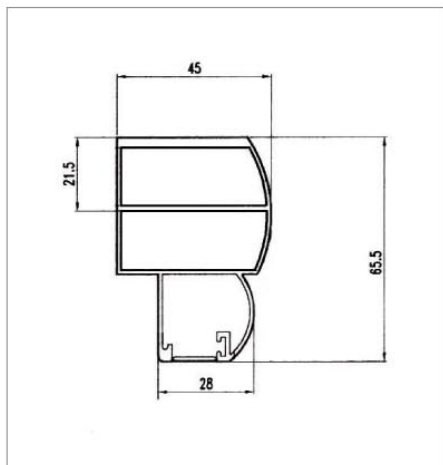


XGJ-095  
WT/M:0.515 kg/m

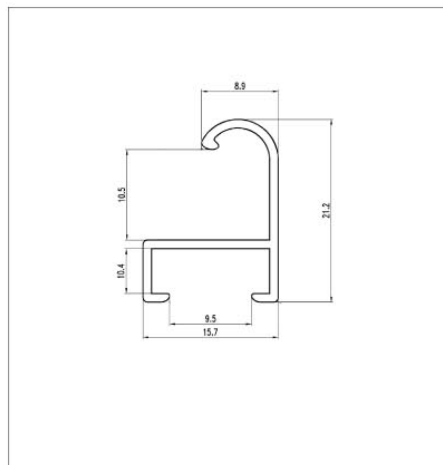


XGJ-095A  
WT/M:0.543 kg/m

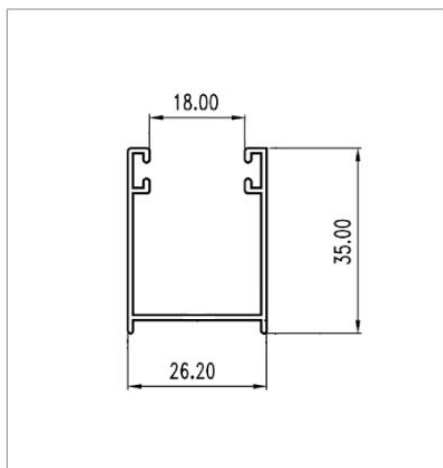
ALUMINIUM PROFILES



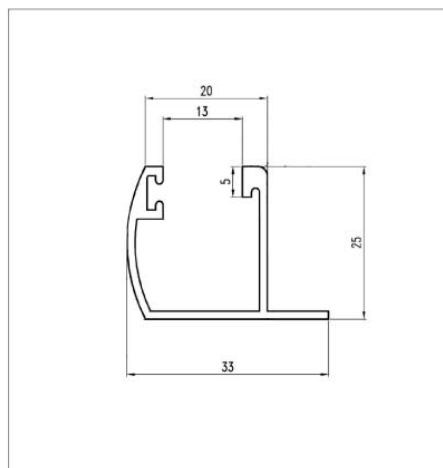
XGJ-070  
WT/M:1.169 kg/m



XGJ-085  
WT/M:0.142 kg/m

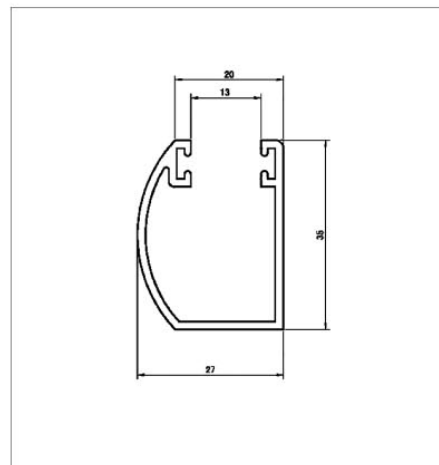


JL2570  
WT/M:0.311 kg/m

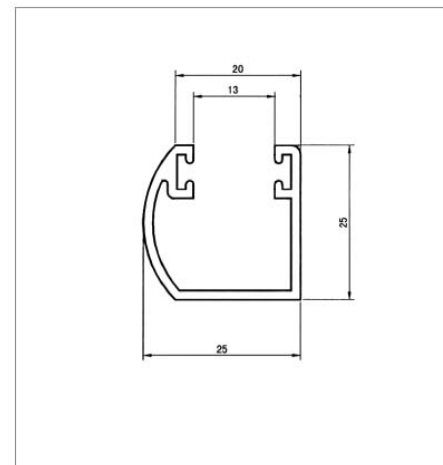


XGJ-118  
WT/M:0.352 kg/m

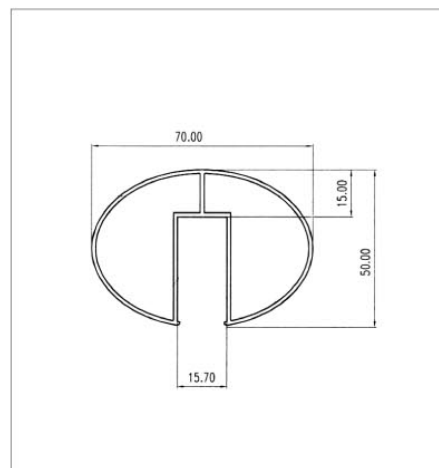
ALUMINIUM PROFILES



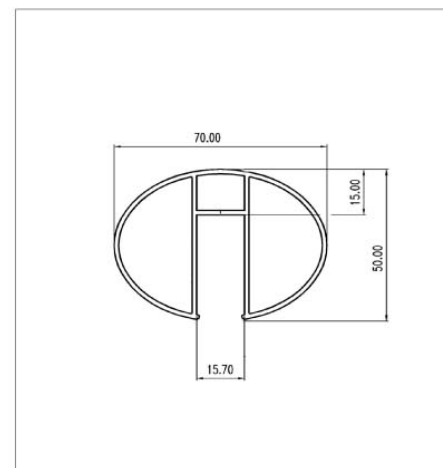
YLJ02425  
WT/M:0.451 kg/m



YLJ02425A  
WT/M:0.365 kg/m

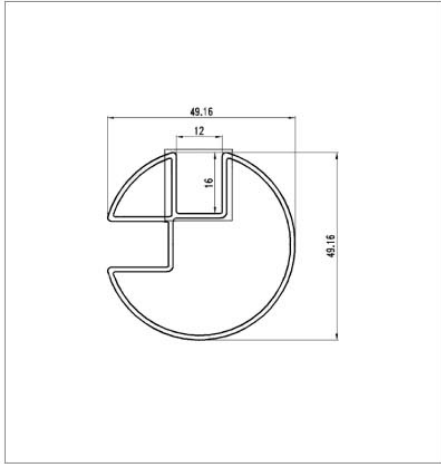


WLD-184B  
WT/M:0.888 kg/m

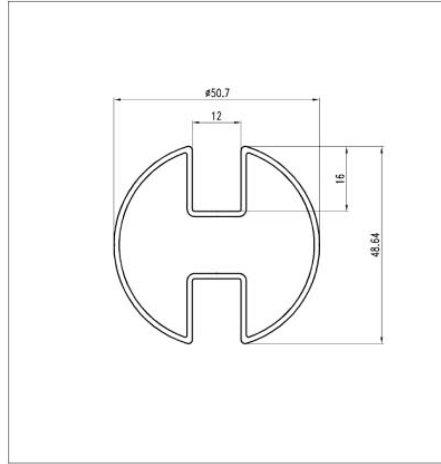


WLD-184A  
WT/M:1.135 kg/m

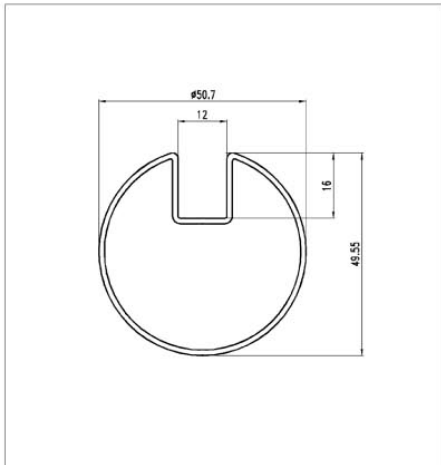
**ALUMINIUM PROFILES**



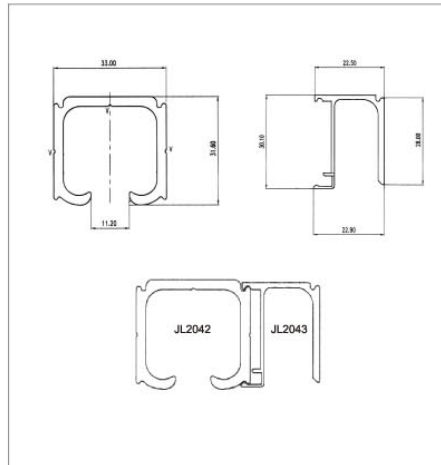
**XGG-908**  
WT/M:0.706 kg/m



**XGG-909**  
WT/M:0.785 kg/m



**XGG-910**  
WT/M:0.656 kg/m



**JL2042/2043**  
WT/M:0.778/0.338 kg/m

Series of horizontal dashed lines for notes or specifications.